

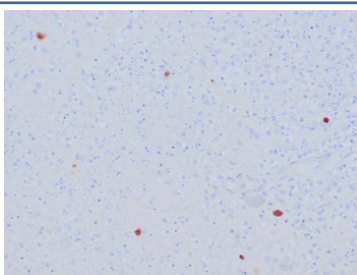
Herpes Simplex Virus Type I Antibody / HSV1 [clone HSVI/8375R] (V5324)

Catalog No.	Formulation	Size
V5324-100UG	0.2 mg/ml in 1X PBS with 0.1 mg/ml BSA (US sourced), 0.05% sodium azide	100 ug
V5324-20UG	0.2 mg/ml in 1X PBS with 0.1 mg/ml BSA (US sourced), 0.05% sodium azide	20 ug
V5324SAF-100UG	1 mg/ml in 1X PBS; BSA free, sodium azide free	100 ug

Recombinant **RABBIT MONOCLONAL**

[Bulk quote request](#)

Availability	1-3 business days
Species Reactivity	Herpes Simplex Virus 1
Format	Purified
Host	Rabbit
Clonality	Recombinant Rabbit Monoclonal
Isotype	Rabbit IgG, kappa
Clone Name	HSVI/8375R
Purity	Protein A affinity
Localization	Cytoplasm, Nucleus
Applications	Immunohistochemistry (FFPE) : 1-2ug/ml for 30 min at RT
Limitations	This Herpes Simplex Virus Type I antibody is available for research use only.



Immunohistochemistry of Herpes Simplex Virus Type I antibody in human HSV-infected tissue. FFPE human HSV-infected sections were subjected to heat-induced epitope retrieval by boiling in pH 9, 10 mM Tris with 1 mM EDTA for 20 minutes followed by cooling prior to staining. The recombinant rabbit monoclonal Herpes Simplex Virus Type I antibody clone HSVI/8375R was used as the detecting antibody. HRP-DAB brown staining is observed in scattered infected cells, with signal localized predominantly to the nucleus and cytoplasm of positive cells, while surrounding tissue shows minimal background staining. The staining pattern is consistent with Herpes simplex virus type 1 antigen expression in infected human tissue.

Description

Herpes Simplex Virus Type I Antibody | HSV1 (clone HSVI/8375R) recognizes Herpes simplex virus type 1, an enveloped double stranded DNA virus classified within the Alphaherpesvirinae subfamily of the Herpesviridae family. HSV1 antibody, also referred to as HSV-1 antibody and Herpes simplex virus 1 antibody in the literature, detects viral antigens expressed

during active replication and viral reactivation. Clone HSVI/8375R is produced as a recombinant rabbit monoclonal antibody, providing defined specificity and lot-to-lot consistency for HSV-1 detection in research settings.

Herpes simplex virus type 1 primarily infects epithelial cells of the oral and facial mucosa before establishing lifelong latency in sensory neurons, particularly within the trigeminal ganglia. During lytic infection, HSV-1 expresses immediate early, early, and late proteins that coordinate viral gene transcription, DNA replication, and virion assembly. Reactivation from latency leads to renewed viral protein synthesis and anterograde transport to peripheral tissues, resulting in recurrent lesions. Detection of HSV-1 antigen expression is therefore central to studies of viral replication dynamics and latency models.

The HSV-1 genome encodes numerous structural and regulatory proteins, including envelope glycoproteins such as gB, gC, gD, and gE, along with nuclear transcriptional regulators required for viral propagation. Viral antigens may localize to the nucleus, cytoplasm, or cellular membranes depending on the stage of infection. The recombinant rabbit monoclonal clone HSVI/8375R recognizes HSV-1 antigens and supports reproducible monoclonal detection of viral protein expression across experimental systems.

HSV-1 infection is associated with orolabial lesions, keratitis, encephalitis, and more severe disease in immunocompromised individuals. In research laboratories, HSV-1 is widely used to investigate viral latency, neuronal tropism, immune evasion mechanisms, and antiviral therapeutic development. A recombinant antibody format enables consistent performance and defined epitope recognition, supporting standardized experimental design.

Herpes Simplex Virus Type I Antibody | HSV1 (clone HSVI/8375R) is suitable for research applications focused on viral detection, host-pathogen interactions, and molecular analysis of Herpes simplex virus type 1 biology.

Application Notes

Optimal dilution of the Herpes Simplex Virus Type I antibody should be determined by the researcher.

Immunogen

Detergent-solubilized herpes simplex virus (HSV) type 1 infected cells were used as the immunogen for the Herpes Simplex Virus Type I antibody.

Storage

Aliquot the Herpes Simplex Virus Type I antibody and store frozen at -20°C or colder. Avoid repeated freeze-thaw cycles.