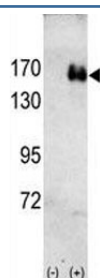


## HER2 Antibody (F50602)

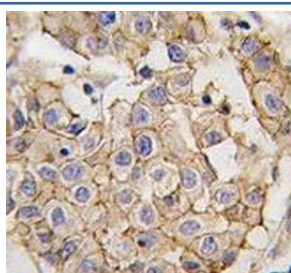
Catalog No.	Formulation	Size
F50602-0.4ML	In 1X PBS, pH 7.4, with 0.09% sodium azide	0.4 ml
F50602-0.08ML	In 1X PBS, pH 7.4, with 0.09% sodium azide	0.08 ml

[Bulk quote request](#)

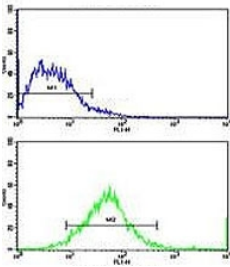
<b>Availability</b>	1-3 business days
<b>Species Reactivity</b>	Human
<b>Format</b>	Purified
<b>Clonality</b>	Polyclonal (rabbit origin)
<b>Isotype</b>	Rabbit Ig
<b>Purity</b>	Purified
<b>UniProt</b>	P04626
<b>Applications</b>	Western Blot : 1:1000 IHC (Paraffin) : 1:10-1:50 Flow Cytometry : 1:10-1:50 Immunofluorescence : 1:10-1:50
<b>Limitations</b>	This HER2 antibody is available for research use only.



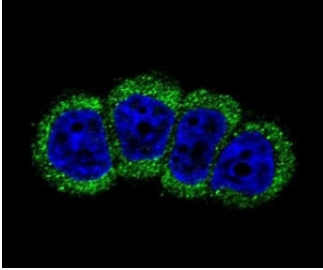
Western blot analysis of HER2 antibody and 293 cell lysate (2 ug/lane) either nontransfected (Lane 1) or transiently transfected with the ErbB2 gene (2).



IHC analysis of FFPE human breast carcinoma tissue stained with HER2 antibody



Flow cytometric analysis of MCF-7 cells using HER2 antibody (bottom histogram) compared to a negative control cell (top histogram). FITC-conjugated goat-anti-rabbit secondary Ab was used for the analysis.



Confocal immunofluorescent analysis of ErbB2/ HER2 antibody with MCF-7 cells followed by Alexa Fluor 488-conjugated goat anti-rabbit IgG (green). DAPI was used as a nuclear counterstain (blue).

## Description

ErbB2, a member of the EGF receptor family, is an essential component of a neuregulin-receptor complex, although neuregulins do not interact with it alone. GP30 is a potential ligand for this receptor. This protein is not activated by EGF, TGF- $\alpha$  and amphiregulin. ErbB2 potentially forms a heterodimer with each of the other ERBB receptors. An interaction with PRKCABP has been suggested. Ligand-binding to this Type I membrane protein may increase phosphorylation on tyrosine residues.

## Application Notes

Titration of the HER2 antibody may be required due to differences in protocols and secondary/substrate sensitivity.

## Immunogen

This HER2 antibody was produced from rabbits immunized with human recombinant ErbB2 protein.

## Storage

Aliquot the HER2 antibody and store frozen at -20°C or colder. Avoid repeated freeze-thaw cycles.