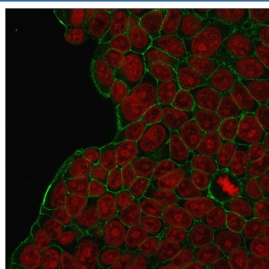


HER2 Antibody ErbB2 [clone HRB2/273] (V2378)

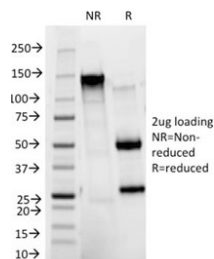
Catalog No.	Formulation	Size
V2378-100UG	0.2 mg/ml in 1X PBS with 0.1 mg/ml BSA (US sourced) and 0.05% sodium azide	100 ug
V2378-20UG	0.2 mg/ml in 1X PBS with 0.1 mg/ml BSA (US sourced) and 0.05% sodium azide	20 ug
V2378SAF-100UG	1 mg/ml in 1X PBS; BSA free, sodium azide free	100 ug

[Bulk quote request](#)

Species Reactivity	Human
Format	Purified
Clonality	Monoclonal (mouse origin)
Isotype	Mouse IgG1, kappa
Clone Name	HRB2/273
Purity	Protein G affinity chromatography
Buffer	1X PBS, pH 7.4
Gene ID	2064 (Human)
Localization	Extracellular/Intracellular cell membrane (this mAb is binds to the extracellular portion of the protein)
Applications	ELISA (order BSA/sodium Azide-free Format For Coating) : Flow Cytometry : 1-2ug/10 ⁶ cells Immunofluorescence : 1-2ug/ml
Limitations	This HER2 / ErbB2 antibody is available for research use only.



Immunofluorescent staining of human MCF-7 cells with HER2 antibody (green) and Reddot nuclear stain (red).



SDS-PAGE analysis of purified, BSA-free HER2 antibody as confirmation of integrity and purity.

Description

This antibody recognizes a protein of 185kDa, which is identified as HER2 / ErbB2. Its epitope is localized in the extracellular domain. HER2 is a member of the EGFR family. This antibody is specific and shows minimal cross-reaction with other members of the EGFR-family. Receptors of this family are located on the plasma membrane and consist of an extracellular ligand-binding domain that is connected to a large intracellular domain by a single transmembrane sequence. HER2 / ErbB2 protein is over-expressed in a variety of carcinomas especially those of breast and ovary.

Application Notes

The concentration stated for each application is a general starting point. Variations in protocols, secondaries and substrates may require the antibody to be titrated up or down for optimal performance.

1. This HER2 antibody binds to the extracellular/cell surface region of the protein.

Immunogen

Recombinant human HER2 protein was used as the immunogen for this antibody.(1)

Storage

Store the HER2 / ErbB2 antibody at 2-8°C.

Alternate Names

p185, CD340, Verb b2 Erythroblastic Leukemia Viral Oncogene Homolog 2, ErbB2 antibody, Neuro/Glioblastoma Derived Oncogene Homolog, HER2 antibody

References (3)