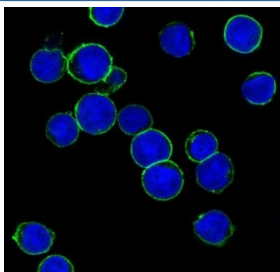


HER2 Antibody / ErbB2 [clone BCI-5] (RQ5055)

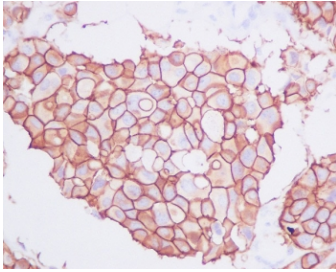
Catalog No.	Formulation	Size
RQ5055	Antibody in PBS with 0.02% sodium azide, 50% glycerol and 0.4-0.5mg/ml BSA	100 ul

[Bulk quote request](#)

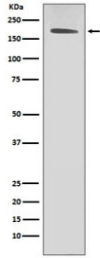
Availability	1-2 weeks
Species Reactivity	Human
Format	Purified
Host	Rabbit
Clonality	Rabbit Monoclonal
Isotype	Rabbit IgG
Clone Name	BCI-5
Purity	Affinity purified
UniProt	P04626
Applications	Western Blot : 1:500-1:2000 Immunohistochemistry (FFPE) : 1:50-1:200 Immunofluorescence/Immunocytochemistry : 1:50-1:200
Limitations	This HER2 antibody is available for research use only.



IF/ICC staining of human SK-BR-3 cells with HER2 antibody (green) and DAPI nuclear stain (blue).



IHC staining of FFPE human breast carcinoma with HER2 antibody. HIER: boil tissue sections in pH6, 10mM citrate buffer, for 10-20 min and allow to cool before testing.



Western blot testing of human SK-BR-3 cell lysate with HER2 antibody.

Description

The ERBB2 gene encodes a member of the epidermal growth factor (EGF) receptor family of receptor tyrosine kinases. This protein has no ligand binding domain of its own and therefore cannot bind growth factors. However, it does bind tightly to other ligand-bound EGF receptor family members to form a heterodimer, stabilizing ligand binding and enhancing kinase-mediated activation of downstream signalling pathways, such as those involving mitogen-activated protein kinase and phosphatidylinositol-3 kinase. [RefSeq]

Application Notes

Optimal dilution of the HER2 antibody should be determined by the researcher.

Immunogen

A synthetic peptide specific to human HER2 / ErbB2 was used as the immunogen for the HER2 antibody.

Storage

Store the HER2 antibody at -20oC.