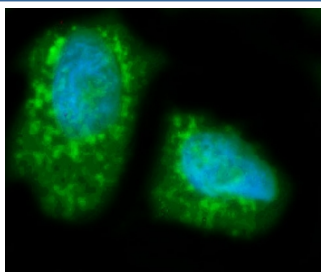


Hepatic Lipase Antibody / LIPC (RQ5666)

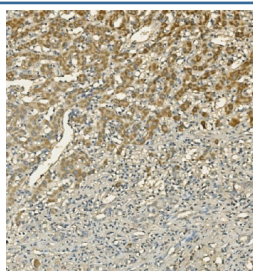
Catalog No.	Formulation	Size
RQ5666	0.5mg/ml if reconstituted with 0.2ml sterile DI water	100 ug

Bulk quote request

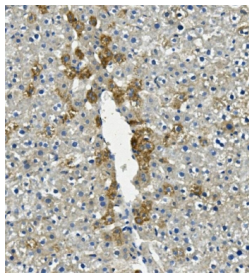
Availability	1-3 business days
Species Reactivity	Human, Rat
Format	Antigen affinity purified
Clonality	Polyclonal
Isotype	Rabbit IgG
Purity	Affinity purified
Buffer	Lyophilized from 1X PBS with 2% Trehalose and 0.025% sodium azide
UniProt	P07867
Applications	Western Blot : 0.5-1ug/ml Immunohistochemistry : 1-2ug/ml Immunofluorescence : 2-4ug/ml Direct ELISA : 0.1-0.5ug/ml
Limitations	This Hepatic Lipase antibody is available for research use only.



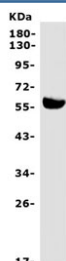
Immunofluorescent staining of FFPE human HepG2 cells with Hepatic Lipase antibody (green) and DAPI nuclear stain (blue). HIER: steam section in pH6 citrate buffer for 20 min.



IHC staining of FFPE human liver cancer with Hepatic Lipase antibody. HIER: boil tissue sections in pH8 EDTA for 20 min and allow to cool before testing.



IHC staining of FFPE rat liver with Hepatic Lipase antibody. HIER: boil tissue sections in pH8 EDTA for 20 min and allow to cool before testing.



Western blot testing of rat liver lysate with Hepatic Lipase antibody. Predicted molecular weight ~56 kDa.

Description

Hepatic lipase (HL), also called hepatic triglyceride lipase (HTGL) or LIPC (for lipase, hepatic), is a form of lipase, catalyzing the hydrolysis of triacylglyceride. It is mapped to 8q24. LIPC encodes hepatic triglyceride lipase, which is expressed in liver. LIPC has the dual functions of triglyceride hydrolase and ligand/bridging factor for receptor-mediated lipoprotein uptake.

Application Notes

Optimal dilution of the Hepatic Lipase antibody should be determined by the researcher.

Immunogen

Recombinant rat protein (amino acids E39-D494) was used as the immunogen for the Hepatic Lipase antibody.

Storage

After reconstitution, the Hepatic Lipase antibody can be stored for up to one month at 4°C. For long-term, aliquot and store at -20°C. Avoid repeated freezing and thawing.