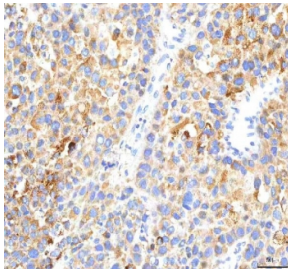


## HEPACAM2 Antibody / HEPACAM family member 2 (RQ8658)

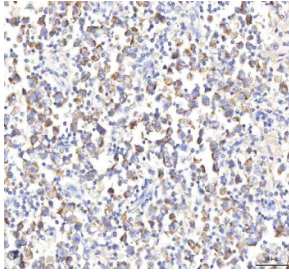
Catalog No.	Formulation	Size
RQ8658	0.5mg/ml if reconstituted with 0.2ml sterile DI water	100 ug

[Bulk quote request](#)

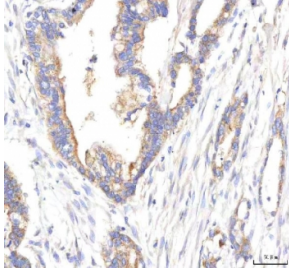
<b>Availability</b>	1-3 days
<b>Species Reactivity</b>	Human
<b>Format</b>	Antigen affinity purified
<b>Host</b>	Rabbit
<b>Clonality</b>	Polyclonal (rabbit origin)
<b>Isotype</b>	Rabbit IgG
<b>Purity</b>	Antigen affinity chromatography
<b>Buffer</b>	Lyophilized from 1X PBS with 2% Trehalose
<b>UniProt</b>	A8MVW5
<b>Localization</b>	Cytoplasm
<b>Applications</b>	Western Blot : 1-2ug/ml Immunohistochemistry (FFPE) : 2-5ug/ml ELISA : 0.1-0.5ug/ml
<b>Limitations</b>	This HEPACAM2 antibody is available for research use only.



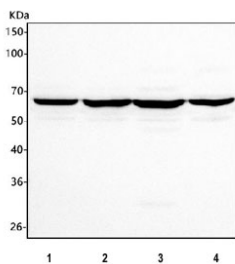
IHC staining of FFPE human liver cancer tissue with HEPACAM2 antibody. HIER: boil tissue sections in pH8 EDTA for 20 min and allow to cool before testing.



IHC staining of FFPE human testicular seminoma tissue with HEPACAM2 antibody. HIER: boil tissue sections in pH8 EDTA for 20 min and allow to cool before testing.



IHC staining of FFPE human pancreas ductal adenocarcinoma tissue with HEPACAM2 antibody. HIER: boil tissue sections in pH8 EDTA for 20 min and allow to cool before testing.



Western blot testing of human 1) HEK293, 2) HEL, 3) Caco-2 and 4) SH-SY5Y cell lysate with HEPACAM2 antibody. Predicted molecular weight ~51 kDa but may be observed a higher molecular weights due to glycosylation.

## Description

HEPACAM family member 2 is a protein that in humans is encoded by the HEPACAM2 gene. This gene encodes a protein related to the immunoglobulin superfamily that plays a role in mitosis. Knockdown of this gene results in prometaphase arrest, abnormal nuclear morphology and apoptosis. Poly(ADP-ribosylation) of the encoded protein promotes its translocation to centrosomes, which may stimulate centrosome maturation. A chromosomal deletion including this gene may be associated with myeloid leukemia and myelodysplastic syndrome in human patients.

## Application Notes

Optimal dilution of the HEPACAM2 antibody should be determined by the researcher.

## Immunogen

An E.coli-derived human recombinant protein (amino acids G31-K345) was used as the immunogen for the HEPACAM2 antibody.

## Storage

After reconstitution, the HEPACAM2 Antibody can be stored for up to one month at 4oC. For long-term, aliquot and store at -20oC. Avoid repeated freezing and thawing.

