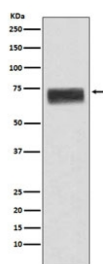


## Hemopexin Antibody / HPX [clone ADAD-8] (RQ5019)

Catalog No.	Formulation	Size
RQ5019	Antibody in PBS with 0.02% sodium azide, 50% glycerol and 0.4-0.5mg/ml BSA	100 ul

[Bulk quote request](#)

Availability	1-2 weeks
Species Reactivity	Human
Format	Purified
Clonality	Rabbit Monoclonal
Isotype	Rabbit IgG
Clone Name	ADAD-8
Purity	Affinity purified
UniProt	P02790
Applications	Western Blot : 1:1000-1:5000
Limitations	This Hemopexin antibody is available for research use only.



Western blot testing of human fetal liver lysate with Hemopexin antibody. Predicted molecular weight: 52-75 kDa depending on glycosylation level.

### Description

Hemopexin binds heme and transports it to the liver for breakdown and iron recovery, after which the free hemopexin returns to the circulation. [UniProt]

### Application Notes

Optimal dilution of the Hemopexin antibody should be determined by the researcher.

### Immunogen

A synthetic peptide specific to human Hemopexin / HPX was used as the immunogen for the Hemopexin antibody.

## **Storage**

Store the Hemopexin antibody at -20oC.