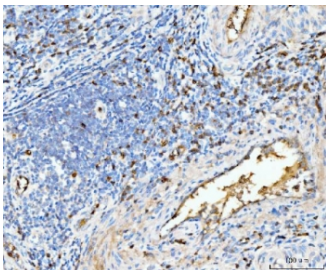


## Hemoglobin alpha Antibody / HBA1/2 (RQ6772)

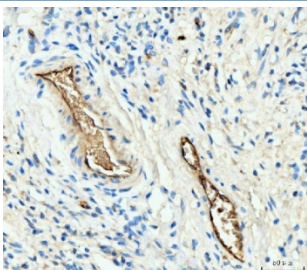
Catalog No.	Formulation	Size
RQ6772	0.5mg/ml if reconstituted with 0.2ml sterile DI water	100 ug

[Bulk quote request](#)

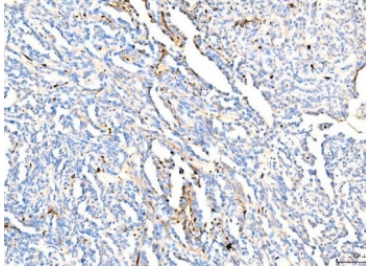
<b>Availability</b>	1-3 business days
<b>Species Reactivity</b>	Human, Mouse
<b>Format</b>	Antigen affinity purified
<b>Host</b>	Rabbit
<b>Clonality</b>	Polyclonal (rabbit origin)
<b>Isotype</b>	Rabbit IgG
<b>Purity</b>	Antigen affinity purified
<b>Buffer</b>	Lyophilized from 1X PBS with 2% Trehalose
<b>UniProt</b>	P69905
<b>Localization</b>	Cytoplasmic, extracellular
<b>Applications</b>	Western Blot : 1-2ug/ml Immunohistochemistry (FFPE) : 2-5ug/ml
<b>Limitations</b>	This Hemoglobin alpha antibody is available for research use only.



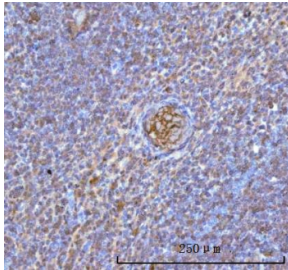
IHC staining of FFPE moderately differentiated adenocarcinoma of the rectum tissue with Hemoglobin alpha antibody. HIER: boil tissue sections in pH8 EDTA for 20 min and allow to cool before testing.



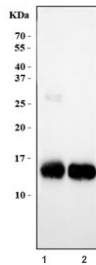
IHC staining of FFPE human gastric signet ring cell carcinoma tissue with Hemoglobin alpha antibody. HIER: boil tissue sections in pH8 EDTA for 20 min and allow to cool before testing.



IHC staining of FFPE human renal cancer tissue with Hemoglobin alpha antibody. HIER: boil tissue sections in pH8 EDTA for 20 min and allow to cool before testing.



IHC staining of FFPE human spleen tissue with Hemoglobin alpha antibody. HIER: boil tissue sections in pH8 EDTA for 20 min and allow to cool before testing.



Western blot testing of 1) human placenta and 2) mouse heart tissue lysate with Hemoglobin alpha antibody. Predicted molecular weight ~15 kDa.

## Description

The human alpha globin gene cluster located on chromosome 16 spans about 30 kb and includes seven loci: 5'- zeta - pseudozeta - mu - pseudoalpha-1 - alpha-2 - alpha-1 - theta - 3'. The alpha-2 (HBA2) and alpha-1 (HBA1) coding sequences are identical. These genes differ slightly over the 5' untranslated regions and the introns, but they differ significantly over the 3' untranslated regions. Two alpha chains plus two beta chains constitute HbA, which in normal adult life comprises about 97% of the total hemoglobin; alpha chains combine with delta chains to constitute HbA-2, which with HbF (fetal hemoglobin) makes up the remaining 3% of adult hemoglobin. Alpha thalassemias result from deletions of each of the alpha genes as well as deletions of both HBA2 and HBA1; some nondeletion alpha thalassemias have also been reported.

## Application Notes

Optimal dilution of the Hemoglobin alpha antibody should be determined by the researcher.

## Immunogen

Amino acids AVHASLDKFLASVSTVLTSKYR from the human protein were used as the immunogen for the Hemoglobin alpha antibody.

## Storage

After reconstitution, the Hemoglobin alpha antibody can be stored for up to one month at 4°C. For long-term, aliquot and store at -20°C. Avoid repeated freezing and thawing.

