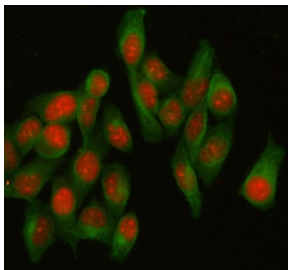


HELLS Antibody / PASG / Lymphoid-specific helicase (RQ8671)

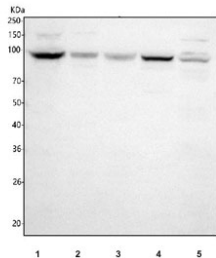
Catalog No.	Formulation	Size
RQ8671	0.5mg/ml if reconstituted with 0.2ml sterile DI water	100 ug

[Bulk quote request](#)

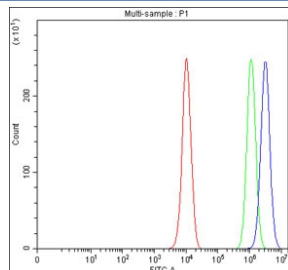
Availability	1-3 days
Species Reactivity	Human, Mouse
Format	Antigen affinity purified
Host	Rabbit
Clonality	Polyclonal (rabbit origin)
Isotype	Rabbit IgG
Purity	Antigen affinity chromatography
Buffer	Lyophilized from 1X PBS with 2% Trehalose
UniProt	Q9NRZ9
Applications	Western Blot : 1-2ug/ml Immunofluorescence : 5ug/ml Flow Cytometry : 1-3ug/million cells ELISA : 0.1-0.5ug/ml
Limitations	This HELLS antibody is available for research use only.



Immunofluorescent staining of FFPE human HeLa cells with HELLS antibody (red) and Beta Tubulin mAb (green). HIER: steam section in pH6 citrate buffer for 20 min.



Western blot testing of 1) human HeLa, 2) human K562, 3) human PC-3, 4) mouse thymus and 5) mouse testis tissue lysate with HELLS antibody. Predicted molecular weight ~97 kDa.



Flow cytometry testing of fixed and permeabilized human PC-3 cells with HELLS antibody at 1ug/million cells (blocked with goat sera); Red=cells alone, Green=isotype control, Blue= HELLS antibody.

Description

Lymphoid-specific helicase (Lsh), also called PASG and SMARCA6, is a member of the SNF2 helicase family of chromatin remodeling proteins that in humans is encoded by the HELLS gene. This gene encodes a lymphoid-specific helicase. Other helicases function in processes involving DNA strand separation, including replication, repair, recombination, and transcription. This protein is thought to be involved with cellular proliferation and may play a role in leukemogenesis. Alternatively spliced transcript variants encoding different isoforms have been identified.

Application Notes

Optimal dilution of the HELLS antibody should be determined by the researcher.

Immunogen

An E.coli-derived human recombinant protein (amino acids N167-F838) was used as the immunogen for the HELLS antibody.

Storage

After reconstitution, the HELLS Antibody can be stored for up to one month at 4oC. For long-term, aliquot and store at -20oC. Avoid repeated freezing and thawing.