

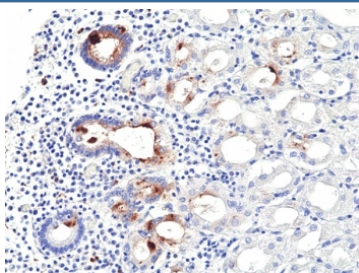
Helicobacter pylori Antibody [clone RM429] (R20444)

Catalog No.	Formulation	Size
R20444-0.1ML	Antibody in PBS with 50% glycerol, 1% BSA and 0.09% sodium azide	100 ul

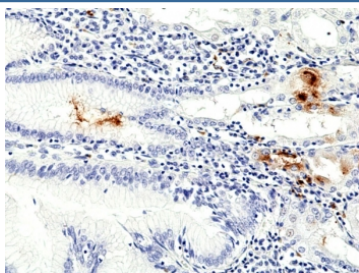
Recombinant **RABBIT MONOCLONAL**

[Bulk quote request](#)

Availability	1-3 business days
Species Reactivity	Helicobacter Pylori
Format	Purified
Host	Rabbit
Clonality	Recombinant Rabbit Monoclonal
Isotype	Rabbit IgG
Clone Name	RM429
Purity	Protein A purified from animal origin-free supernatant
Applications	Immunohistochemistry (FFPE) : 1:50-1:100
Limitations	This recombinant Helicobacter pylori antibody is available for research use only.



IHC staining of FFPE human stomach tissue with recombinant Helicobacter pylori antibody at 1:100.



IHC staining of FFPE human stomach tissue with recombinant Helicobacter pylori antibody at 1:100.

Description

This antibody reacts to *Helicobacter pylori*.

Application Notes

The stated application concentrations are suggested starting points. Titration of the recombinant *Helicobacter pylori* antibody may be required due to differences in protocols and secondary/substrate sensitivity.

Immunogen

Proteins purified from *Helicobacter pylori* was used as the immunogen for the recombinant *Helicobacter pylori* antibody.

Storage

Store the recombinant *Helicobacter pylori* antibody at -20oC.