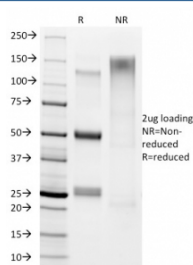


Helicobacter pylori Antibody [clone HP/1336] (V8827)

Catalog No.	Formulation	Size
V8827-100UG	0.2 mg/ml in 1X PBS with 0.1 mg/ml BSA (US sourced), 0.05% sodium azide	100 ug
V8827-20UG	0.2 mg/ml in 1X PBS with 0.1 mg/ml BSA (US sourced), 0.05% sodium azide	20 ug
V8827SAF-100UG	1 mg/ml in 1X PBS; BSA free, sodium azide free	100 ug

[Bulk quote request](#)

Availability	1-3 business days
Species Reactivity	Helicobacter pylori
Format	Purified
Clonality	Monoclonal (mouse origin)
Isotype	Mouse IgG1, kappa
Clone Name	HP/1336
Purity	Protein A/G affinity
UniProt	Not Known
Localization	Cell surface and cytoplasm
Applications	ELISA : 1-5ug/ml (order BSA-free format for coating)
Limitations	This Helicobacter pylori antibody is available for research use only.



SDS-PAGE analysis of purified, BSA-free Helicobacter pylori antibody (clone HP/1336) as confirmation of integrity and purity.

Description

The spiral shaped bacterium *Helicobacter pylori* is strongly associated with inflammation of the stomach and is also implicated in the development of gastric malignancy. *H. pylori* is known to cause peptic ulcers and chronic gastritis in human. It is associated with duodenal ulcers and may be involved in development of adenocarcinoma and low-grade lymphoma of mucosa associated lymphoid tissue in the stomach. This antibody stains the individual *H. pylori* bacterium

when it presents on the surface of the epithelium or in the cytoplasm of the epithelial cells in biopsy tissue sections from the antrum and body of the stomach.

Application Notes

Optimal dilution of the *Helicobacter pylori* antibody should be determined by the researcher.

Immunogen

Total sonicate of *Helicobacter pylori* was used as the immunogen for the *Helicobacter pylori* antibody.

Storage

Aliquot the *Helicobacter pylori* antibody and store frozen at -20oC or colder. Avoid repeated freeze-thaw cycles.