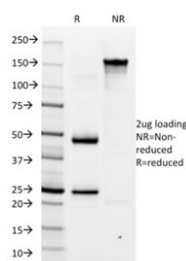


Helicobacter pylori Antibody / H. Pylori [clone HP/1334] (V5836)

Catalog No.	Formulation	Size
V5836-100UG	0.2 mg/ml in 1X PBS with 0.1 mg/ml BSA (US sourced), 0.05% sodium azide	100 ug
V5836-20UG	0.2 mg/ml in 1X PBS with 0.1 mg/ml BSA (US sourced), 0.05% sodium azide	20 ug
V5836SAF-100UG	1 mg/ml in 1X PBS; BSA free, sodium azide free	100 ug

[Bulk quote request](#)

Availability	1-3 business days
Species Reactivity	Human
Format	Purified
Host	Mouse
Clonality	Monoclonal (mouse origin)
Isotype	Mouse IgG1, kappa
Clone Name	HP/1334
Purity	Protein G affinity
Applications	ELISA : Flow Cytometry : 1-2ug/million cells Immunofluorescence : 1-3ug/ml
Limitations	This Helicobacter pylori antibody is available for research use only.



SDS-PAGE analysis of purified, BSA-free Helicobacter pylori antibody (clone HP/1334) as confirmation of integrity and purity.

Description

The spiral shaped bacterium Helicobacter pylori is strongly associated with inflammation of the stomach and is also implicated in the development of gastric malignancy. H. pylori is known to cause peptic ulcers and chronic gastritis in human. It is associated with duodenal ulcers and may be involved in development of adenocarcinoma and low-grade lymphoma of mucosa associated lymphoid tissue in the stomach. This antibody stains the individual H. pylori bacterium

when it presents on the surface of the epithelium or in the cytoplasm of the epithelial cells in biopsy tissue sections from the antrum and body of the stomach.

Application Notes

Optimal dilution of the *Helicobacter pylori* antibody should be determined by the researcher.

Immunogen

Total sonicate of *Helicobacter pylori* was used as the immunogen for the *Helicobacter pylori* antibody.

Storage

Aliquot the *Helicobacter pylori* antibody and store frozen at -20oC or colder. Avoid repeated freeze-thaw cycles.