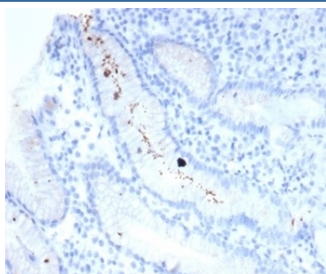


## Helicobacter pylori Antibody (Catalase) [clone HPYL/7225] (V9736)

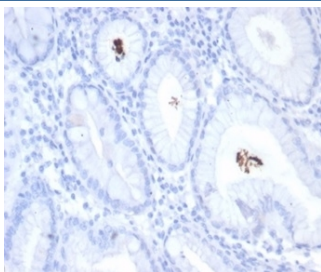
Catalog No.	Formulation	Size
V9736-100UG	0.2 mg/ml in 1X PBS with 0.1 mg/ml BSA (US sourced), 0.05% sodium azide	100 ug
V9736-20UG	0.2 mg/ml in 1X PBS with 0.1 mg/ml BSA (US sourced), 0.05% sodium azide	20 ug
V9736SAF-100UG	1 mg/ml in 1X PBS; BSA free, sodium azide free	100 ug

[Bulk quote request](#)

<b>Availability</b>	1-3 business days
<b>Species Reactivity</b>	Helicobacter pylori
<b>Format</b>	Purified
<b>Host</b>	Mouse
<b>Clonality</b>	Monoclonal (mouse origin)
<b>Isotype</b>	Mouse IgG1, kappa
<b>Clone Name</b>	HPYL/7225
<b>Purity</b>	Protein A/G affinity
<b>UniProt</b>	Not Applicable
<b>Localization</b>	Cell surface, Cytoplasm
<b>Applications</b>	Immunohistochemistry (FFPE) : 1-2ug/ml
<b>Limitations</b>	This Helicobacter pylori antibody is available for research use only.



IHC staining of FFPE human H. pylori-infected stomach with Helicobacter pylori (clone HPYL/7225) antibody (clone HPYL/7225). HIER: boil tissue sections in pH 9 10mM Tris with 1mM EDTA for 20 min and allow to cool before testing.



IHC staining of FFPE H. pylori-infected human stomach tissue with Helicobacter pylori antibody (clone HPYL/7225). HIER: boil tissue sections in pH 9 10mM Tris with 1mM EDTA for 20 min and allow to cool before testing.

## Description

The spiral shaped bacterium *Helicobacter pylori* is strongly associated with inflammation of the stomach and is also implicated in the development of gastric malignancy. *H. pylori* is known to cause peptic ulcers and chronic gastritis in human. It is associated with duodenal ulcers and may be involved in development of adenocarcinoma and low-grade lymphoma of mucosa associated lymphoid tissue in the stomach. This antibody stains the individual *H. pylori* bacterium when it presents on the surface of the epithelium or in the cytoplasm of the epithelial cells in biopsy tissue sections from the antrum and body of the stomach.

## Application Notes

Optimal dilution of the *Helicobacter pylori* antibody should be determined by the researcher.

## Immunogen

A portion of amino acids 323-445 from the *Helicobacter pylori* Catalase protein was used as the immunogen for the *Helicobacter pylori* antibody.

## Storage

Aliquot the *Helicobacter pylori* antibody and store frozen at -20°C or colder. Avoid repeated freeze-thaw cycles.