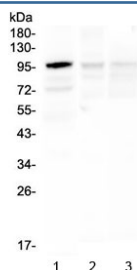


HECTD3 Antibody (RQ4929)

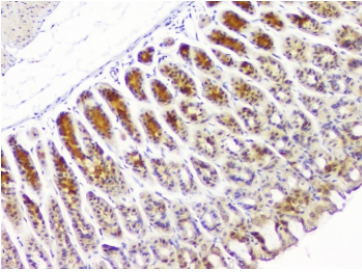
Catalog No.	Formulation	Size
RQ4929	0.5mg/ml if reconstituted with 0.2ml sterile DI water	100 ug

Bulk quote request

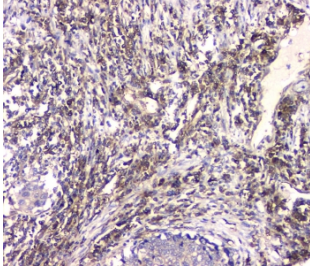
Availability	1-3 business days
Species Reactivity	Human, Mouse, Rat
Format	Antigen affinity purified
Host	Rabbit
Clonality	Polyclonal (rabbit origin)
Isotype	Rabbit IgG
Purity	Antigen affinity purified
Buffer	Lyophilized from 1X PBS with 2% Trehalose and 0.025% sodium azide
UniProt	Q5T447
Localization	Cytoplasmic
Applications	Western Blot : 0.5-1ug/ml Immunohistochemistry (FFPE) : 1-2ug/ml Flow Cytometry : 1-3ug/10 ⁶ cells
Limitations	This HECTD3 antibody is available for research use only.



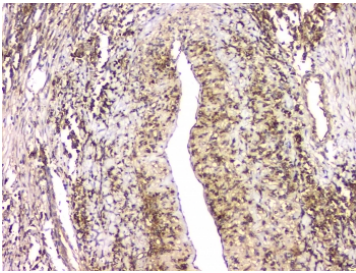
Western blot testing of 1) human Caco-2, 2) rat brain and 3) mouse brain lysate with HECTD3 antibody at 0.5ug/ml. Predicted molecular weight ~97 kDa.



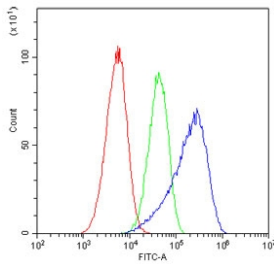
IHC staining of FFPE human stomach tissue with HECTD3 antibody at 1ug/ml. HIER: boil tissue sections in pH6, 10mM citrate buffer, for 10-20 min and allow to cool before testing.



IHC staining of FFPE human lung tissue with HECTD3 antibody at 1ug/ml. HIER: boil tissue sections in pH6, 10mM citrate buffer, for 10-20 min and allow to cool before testing.



IHC staining of FFPE human lung tissue with HECTD3 antibody at 1ug/ml. HIER: boil tissue sections in pH6, 10mM citrate buffer, for 10-20 min and allow to cool before testing.



Flow cytometry testing of human A549 cells with HECTD3 antibody at 1ug/10⁶ cells (blocked with goat sera); Red=cells alone, Green=isotype control, Blue= HECTD3 antibody.

Description

The protein encoded by this gene transfers ubiquitin from an E2 ubiquitin-conjugating enzyme to targeted substrates, leading to the degradation of those substrates. This gene is mapped to 1p34.1. The encoded protein has been shown to transfer ubiquitin to TRIOBP to facilitate cell cycle progression, and to STX8.

Application Notes

Optimal dilution of the HECTD3 antibody should be determined by the researcher.

Immunogen

Amino acids HYASAKVCEEKLRYYAAYNCVAIDTDMSPWEE from the human protein were used as the immunogen for the HECTD3 antibody.

Storage

After reconstitution, the HECTD3 antibody can be stored for up to one month at 4oC. For long-term, aliquot and store at -20oC. Avoid repeated freezing and thawing.

