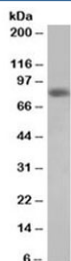


## HEC1 Antibody / NDC80 (R36360)

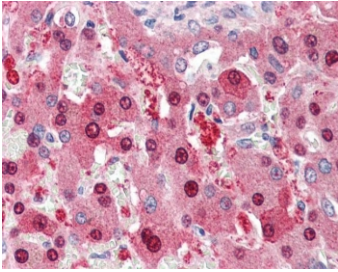
Catalog No.	Formulation	Size
R36360-100UG	0.5 mg/ml in 1X TBS, pH7.3, with 0.5% BSA (US sourced) and 0.02% sodium azide	100 ug

[Bulk quote request](#)

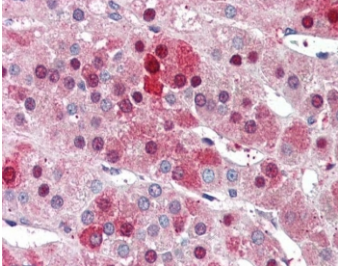
<b>Availability</b>	1-3 business days
<b>Species Reactivity</b>	Human
<b>Format</b>	Antigen affinity purified
<b>Host</b>	Goat
<b>Clonality</b>	Polyclonal (goat origin)
<b>Isotype</b>	Goat Ig
<b>Purity</b>	Antigen affinity
<b>Gene ID</b>	10403
<b>Localization</b>	Nuclear
<b>Applications</b>	Western Blot : 0.5-2ug/ml IHC (FFPE) : 5ug/ml ELISA (peptide) LOD : 1:32000
<b>Limitations</b>	This HEC1 antibody is available for research use only.



Western blot testing of HeLa lysate with HEC1 antibody at 0.5ug/ml. Predicted/observed molecular weight: ~74/74-80 kDa.



IHC testing of FFPE human liver tissue with HEC1 antibody at 5ug/ml. Required HIER: steamed antigen retrieval with pH6 citrate buffer; AP-staining.



IHC testing of FFPE human adrenal gland with HEC1 antibody at 5ug/ml. Required HIER: steamed antigen retrieval with pH6 citrate buffer; AP-staining.

## Description

Additional name(s) for this target protein: Highly expressed in cancer, rich in leucine heptad repeats; NDC80; Kinetochores protein NDC80 homolog

## Application Notes

Optimal dilution of the HEC1 antibody should be determined by the researcher.

## Immunogen

Amino acids YEKKATLIKSSEE were used as the immunogen for this HEC1 antibody.

## Storage

Aliquot and store the HEC1 antibody at -20°C.