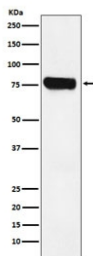


HEC1 Antibody / NDC80 [clone ACBI-14] (RQ4712)

Catalog No.	Formulation	Size
RQ4712	Antibody in PBS with 0.02% sodium azide, 50% glycerol and 0.4-0.5mg/ml BSA	100 ul

[Bulk quote request](#)

Availability	1-2 weeks
Species Reactivity	Human, Mouse, Rat
Format	Purified
Host	Rabbit
Clonality	Rabbit Monoclonal
Isotype	Rabbit IgG
Clone Name	ACBI-14
Purity	Affinity purified
UniProt	O14777
Applications	Western Blot : 1:1000-1:5000
Limitations	This HEC1 antibody is available for research use only.



Western blot testing of human Jurkat cell lysate with HEC1 antibody. Expected molecular weight: 74-80 kDa.

Description

Acts as a component of the essential kinetochore-associated NDC80 complex, which is required for chromosome segregation and spindle checkpoint activity. Required for kinetochore integrity and the organization of stable microtubule binding sites in the outer plate of the kinetochore.

Application Notes

Optimal dilution of the HEC1 antibody should be determined by the researcher.

Immunogen

A synthetic peptide specific to human HEC1 / NDC80 was used as the immunogen for the HEC1 antibody.

Storage

Store the HEC1 antibody at -20oC.