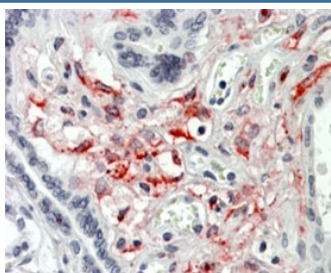


## HCP1 Antibody (R36422)

Catalog No.	Formulation	Size
R36422-100UG	0.5 mg/ml in 1X TBS, pH7.3, with 0.5% BSA (US sourced) and 0.02% sodium azide	100 ug

[Bulk quote request](#)

Availability	1-3 business days
Species Reactivity	Human
Format	Antigen affinity purified
Clonality	Polyclonal (goat origin)
Isotype	Goat Ig
Purity	Antigen affinity
Gene ID	113235
Applications	Immunohistochemistry : 3-5ug/ml
Limitations	This HCP1 antibody is available for research use only.



IHC testing of FFPE human placenta (mesenchymal cells) with HCP1 antibody at 3ug/ml. HIER: steamed with pH6 citrate buffer, AP-staining.

### Description

Additional name(s) for this target protein: Heme carrier protein 1, solute carrier family 46 (folate transporter), member 1; SLC46A1

### Application Notes

Optimal dilution of the HCP1 antibody should be determined by the researcher.

### Immunogen

Amino acids YNGTRQRGGCSNRS were used as the immunogen for this HCP1 antibody.

## Storage

Aliquot and store the HCP1 antibody at -20oC.