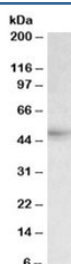


HCP1 Antibody (R34723)

Catalog No.	Formulation	Size
R34723-100UG	0.5 mg/ml in 1X TBS, pH7.3, with 0.5% BSA (US sourced) and 0.02% sodium azide	100 ug

[Bulk quote request](#)

Availability	1-3 business days
Species Reactivity	Human
Format	Antigen affinity purified
Clonality	Polyclonal (goat origin)
Isotype	Goat Ig
Purity	Antigen affinity
Gene ID	113235
Applications	Western Blot : 0.3-1ug/ml ELISA (peptide) LOD : 1:64000
Limitations	This HCP1 antibody is available for research use only.



Western blot testing of human liver lysate with HCP1 antibody at 0.3ug/ml. Predicted molecular weight: ~50kDa.

Description

Additional name(s) for this target protein: Heme carrier protein 1, solute carrier family 46 (folate transporter), member 1; SLC46A1

Application Notes

Optimal dilution of the HCP1 antibody should be determined by the researcher.

Immunogen

Amino acids LKEPKSTRLFTFRH were used as the immunogen for this HCP1 antibody.

Storage

Aliquot and store the HCP1 antibody at -20oC.