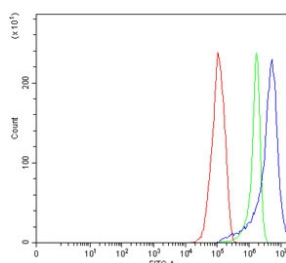


HCLS1 Antibody / Hematopoietic lineage cell-specific protein (RQ7180)

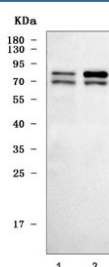
Catalog No.	Formulation	Size
RQ7180	0.5mg/ml if reconstituted with 0.2ml sterile DI water	100 ug

Bulk quote request

Availability	1-3 business days
Species Reactivity	Human
Format	Antigen affinity purified
Host	Rabbit
Clonality	Polyclonal (rabbit origin)
Isotype	Rabbit IgG
Purity	Antigen affinity purified
Buffer	Lyophilized from 1X PBS with 2% Trehalose
UniProt	P14317
Applications	Western Blot : 0.5-1ug/ml Flow Cytometry : 1-3ug/million cells Direct ELISA : 0.1-0.5ug/ml
Limitations	This HCLS1 antibody is available for research use only.



Flow cytometry testing of human RT4 cells with HCLS1 antibody at 1ug/million cells (blocked with goat sera); Red=cells alone, Green=isotype control, Blue= HCLS1 antibody.



Western blot testing of human 1) Jurkat and 2) Daudi cell lysate with HCLS1 antibody. Predicted molecular weight ~54 kDa but commonly observed at 75-80 kDa.

Description

Hematopoietic lineage cell-specific protein is a protein that in humans is encoded by the HCLS1 gene. Enables RNA polymerase II-specific DNA-binding transcription factor binding activity and protein kinase binding activity. Involved in several processes, including positive regulation of intracellular signal transduction; positive regulation of protein phosphorylation; and regulation of transcription, DNA-templated. Located in cytosol; nucleus; and plasma membrane. Part of transcription regulator complex.

Application Notes

Optimal dilution of the HCLS1 antibody should be determined by the researcher.

Immunogen

Recombinant human protein (amino acids N213-K473) was used as the immunogen for the HCLS1 antibody.

Storage

After reconstitution, the HCLS1 antibody can be stored for up to one month at 4°C. For long-term, aliquot and store at -20°C. Avoid repeated freezing and thawing.