

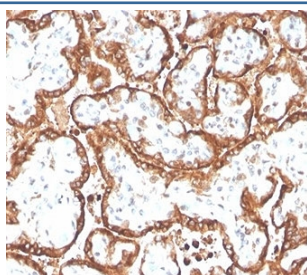
HCGb Antibody / HCG-beta [clone HCGb/4709R] (V4031)

| Catalog No. | Formulation | Size |
|----------------|---|--------|
| V4031-100UG | 0.2 mg/ml in 1X PBS with 0.1 mg/ml BSA (US sourced), 0.05% sodium azide | 100 ug |
| V4031-20UG | 0.2 mg/ml in 1X PBS with 0.1 mg/ml BSA (US sourced), 0.05% sodium azide | 20 ug |
| V4031SAF-100UG | 1 mg/ml in 1X PBS; BSA free, sodium azide free | 100 ug |

Recombinant **RABBIT MONOCLONAL**

[Bulk quote request](#)

| | |
|--------------------|--|
| Availability | 1-3 business days |
| Species Reactivity | Human |
| Format | Purified |
| Clonality | Recombinant Rabbit Monoclonal |
| Isotype | Rabbit IgG, kappa |
| Clone Name | HCGb/4709R |
| Purity | Protein A/G affinity |
| UniProt | P01233 |
| Localization | Cytoplasm, secreted |
| Applications | Immunohistochemistry (FFPE) : 1-2ug/ml |
| Limitations | This HCGb antibody is available for research use only. |



IHC staining of FFPE human placental tissue with HCGb antibody (HCGb/4709R). HIER: boil tissue sections in pH 9 10mM Tris with 1mM EDTA for 20 min and allow to cool before testing.

Description

Human chorionic gonadotropin antibody (hCG) is a glycoprotein hormone synthesized in syncytiotrophoblastic cells of placenta and in certain trophoblastic tumors. The hormone-specific alpha chains have molecular weights of 13 kDa. HCG is found in moles and choriocarcinoma, chorionic components of germ cell tumors, and syncytiotrophoblast like cells in seminoma/dysgerminoma and embryonal carcinoma. In diagnostic pathology, hCG is a useful marker for classification of

germ cell tumors, identification of extragonadal germ cell tumors.

Application Notes

Optimal dilution of the HCGb antibody should be determined by the researcher.

Immunogen

A recombinant human partial protein was used as the immunogen for the HCGb antibody.

Storage

Aliquot the HCGb antibody and store frozen at -20oC or colder. Avoid repeated freeze-thaw cycles.