

hCG Receptor Antibody (R30629)

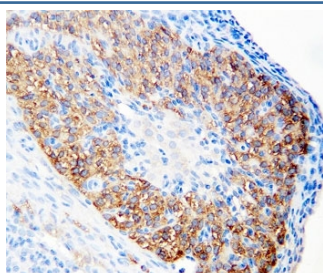
Catalog No.	Formulation	Size
R30629	0.5mg/ml if reconstituted with 0.2ml sterile DI water	100 ug

Bulk quote request

Availability	1-3 business days
Species Reactivity	Human, Rat
Format	Antigen affinity purified
Host	Rabbit
Clonality	Polyclonal (rabbit origin)
Isotype	Rabbit IgG
Purity	Antigen affinity
Buffer	Lyophilized from 1X PBS with 2.5% BSA and 0.025% sodium azide/thimerosal
UniProt	P22888
Applications	Western Blot : 0.5-1ug/ml Immunohistochemistry (FFPE) : 0.5-1ug/ml
Limitations	This hCG receptor antibody is available for research use only.



Western blot testing of hCG receptor antibody and MCF-7 lysate. Predicted/observed molecular weight: ~79kDa.



IHC-P: hCG receptor antibody testing of rat ovary tissue. HIER: steamed with pH6 citrate buffer.

Description

The Luteinizing hormone/choriogonadotropin receptor is a member of a subfamily of G protein-coupled receptors (GPCR) characterized by the presence of a large N-terminal extracellular domain containing several leucine-rich repeats (LRR). This glycoprotein hormone receptor family has been named to the LRR-containing GPCR (LGR) family. The LHCGR gene contains 11 exons and spans approximately 80 kb and it is mapped to chromosome 2p21. In the ovary, theca, stromal, late-stage(luteinizing) granulosa, and luteal cells contain LHCGR. In the testes, Leydig cells contain LHCGR.

Application Notes

The stated application concentrations are suggested starting amounts. Titration of the hCG receptor antibody may be required due to differences in protocols and secondary/substrate sensitivity.

Immunogen

An amino acid sequence from the N-terminus of human hCG receptor (YLSICNTGIRKFPDVTK) was used as the immunogen for this hCG receptor antibody.

Storage

After reconstitution, the hCG receptor antibody can be stored for up to one month at 4°C. For long-term, aliquot and store at -20°C. Avoid repeated freezing and thawing.