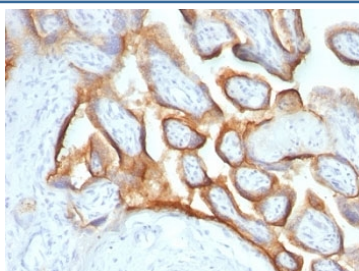


hCG alpha Antibody / Luteinizing Hormone alpha [clone SPM552] (V9004)

Catalog No.	Formulation	Size
V9004-100UG	0.2 mg/ml in 1X PBS with 0.1 mg/ml BSA (US sourced) and 0.05% sodium azide	100 ug
V9004-20UG	0.2 mg/ml in 1X PBS with 0.1 mg/ml BSA (US sourced) and 0.05% sodium azide	20 ug
V9004SAF-100UG	1 mg/ml in 1X PBS; BSA free, sodium azide free	100 ug
V9004IHC-7ML	Prediluted in 1X PBS with 0.1 mg/ml BSA (US sourced) and 0.05% sodium azide; *For IHC use only*	7 ml

Bulk quote request

Availability	1-3 business days
Species Reactivity	Human
Format	Purified
Clonality	Monoclonal (mouse origin)
Isotype	Mouse IgG1, kappa
Clone Name	SPM552
Purity	Protein G affinity chromatography
UniProt	P01215
Localization	Cytoplasmic, secreted
Applications	Immunohistochemistry (FFPE) : 1-2ug/ml for 30 min at RT
Limitations	This hCG alpha antibody is available for research use only.



IHC: Formalin-fixed, paraffin-embedded human placenta stained with hCG alpha antibody (SPM552).

Description

HCG is a glycoprotein which is secreted in large quantities by normal trophoblasts. It is present only in trace amounts in non-pregnant urine and sera but rises sharply during pregnancy. HCG is composed of two non-identical, non-covalently linked polypeptide chains designated as the alpha and beta subunits. The alpha subunit is identical to that of thyroid stimulating hormone (TSH), follicle stimulating hormone (FSH), and luteinizing hormone (LH). This mAb reacts with the alpha subunit of HCG.

Application Notes

The optimal dilution of the hCG alpha antibody for each application should be determined by the researcher.

1. No special pre-treatment is required for staining of formalin-fixed tissues. Note that HIER is NOT recommended for this antibody.
2. The prediluted format is supplied in a dropper bottle and is optimized for use in IHC. After epitope retrieval step (if required), drip mAb solution onto the tissue section and incubate at RT for 30 min.

Immunogen

Recombinant hCG alpha protein was used as the immunogen for this hCG alpha antibody.

Storage

Store the hCG alpha antibody at 2-8oC (with azide) or aliquot and store at -20oC or colder (without azide).