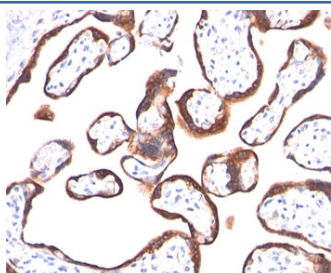


## hCG alpha Antibody / Luteinizing Hormone alpha [clone HCGa/53] (V2091)

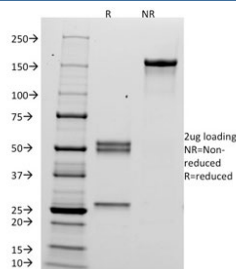
Catalog No.	Formulation	Size
V2091-100UG	0.2 mg/ml in 1X PBS with 0.1 mg/ml BSA (US sourced) and 0.05% sodium azide	100 ug
V2091-20UG	0.2 mg/ml in 1X PBS with 0.1 mg/ml BSA (US sourced) and 0.05% sodium azide	20 ug
V2091SAF-100UG	1 mg/ml in 1X PBS; BSA free, sodium azide free	100 ug
V2091IHC-7ML	Prediluted in 1X PBS with 0.1 mg/ml BSA (US sourced) and 0.05% sodium azide; *For IHC use only*	7 ml

[Bulk quote request](#)

<b>Species Reactivity</b>	Human
<b>Format</b>	Purified
<b>Clonality</b>	Monoclonal (mouse origin)
<b>Isotype</b>	Mouse IgG1, kappa
<b>Clone Name</b>	HCGa/53
<b>Purity</b>	Protein G purified monoclonal antibody
<b>Buffer</b>	1X PBS, pH 7.4
<b>UniProt</b>	P01215
<b>Localization</b>	Cytoplasmic, secreted
<b>Applications</b>	Immunohistochemistry (FFPE) : 1-2ug/ml for 30 min at RT (HIER is not recommended for this antibody)
<b>Limitations</b>	This <b>hCG alpha antibody</b> is available for research use only.



IHC testing of human placenta stained with hCG alpha antibody (HCGa/53). Note specific membrane staining.



SDS-PAGE analysis of purified, BSA-free hCG alpha antibody (clone HCGa/53) as confirmation of integrity and purity.

## Description

This antibody reacts with a protein of ~13kDa, identified as alpha sub-unit of HCG. HCG is a glycoprotein which is secreted in large quantities by normal trophoblasts. HCG is present only in trace amounts in non-pregnant urine and sera but rises sharply during pregnancy. HCG is composed of two non-identical, non-covalently linked polypeptide chains designated as the alpha and beta subunits. The alpha subunit is identical to that of thyroid stimulating hormone (TSH), follicle stimulating hormone (FSH), and luteinizing hormone (LH).

## Application Notes

Variations in protocols, secondaries and substrates may require the hCG alpha antibody to be titrated for optimal performance.

1. No pretreatment required for FFPE section testing. HIER is not recommended.
2. The prediluted format is supplied in a dropper bottle and is optimized for use in IHC. After epitope retrieval step (if required), drip mAb solution onto the tissue section and incubate at RT for 30 min.

## Immunogen

Recombinant protein was used as the immunogen for this hCG alpha antibody.

## Storage

Store the hCG alpha antibody at 2-8°C (with azide) or aliquot and store at -20°C or colder (without azide).

## Alternate Names

FSHA; GPHA1; LHA; TSHA

## References (1)