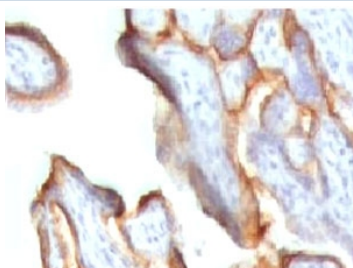


## hCG alpha Antibody / Luteinizing Hormone alpha [clone CGA91-2] (V7015)

Catalog No.	Formulation	Size
V7015-100UG	0.2 mg/ml in 1X PBS with 0.1 mg/ml BSA (US sourced) and 0.05% sodium azide	100 ug
V7015-20UG	0.2 mg/ml in 1X PBS with 0.1 mg/ml BSA (US sourced) and 0.05% sodium azide	20 ug
V7015SAF-100UG	1 mg/ml in 1X PBS; BSA free, sodium azide free	100 ug
V7015IHC-7ML	Prediluted in 1X PBS with 0.1 mg/ml BSA (US sourced) and 0.05% sodium azide; *For IHC use only*	7 ml

**Bulk quote request**

<b>Species Reactivity</b>	Human
<b>Format</b>	Purified
<b>Clonality</b>	Monoclonal (mouse origin)
<b>Isotype</b>	Mouse IgG1, kappa
<b>Clone Name</b>	CGA91-2
<b>Purity</b>	Protein G purified monoclonal antibody
<b>Buffer</b>	1X PBS, pH 7.4
<b>UniProt</b>	P01215
<b>Localization</b>	Cytoplasmic, secreted
<b>Applications</b>	Immunohistochemistry (FFPE) : 1-2ug/ml for 30 min at RT Prediluted IHC Only Format : incubate for 30 min at RT (1)
<b>Limitations</b>	This hCG alpha antibody is available for research use only.



IHC testing of FFPE human placenta stained with hCG alpha antibody (CGA91-2).

## Description

This antibody reacts with a protein of ~13kDa, identified as alpha sub-unit of hCG. HCG is a glycoprotein which is secreted in large quantities by normal trophoblasts. HCG is present only in trace amounts in non-pregnant urine and sera but rises sharply during pregnancy. HCG is composed of two non-identical, non-covalently linked polypeptide chains designated as the alpha and beta subunits. The alpha subunit is identical to that of thyroid stimulating hormone (TSH), follicle stimulating hormone (FSH), and luteinizing hormone (LH).

## Application Notes

Variations in protocols, secondaries and substrates may require the hCG alpha antibody to be titrated for optimal performance.

1. The prediluted format is supplied in a dropper bottle and is optimized for use in IHC. After epitope retrieval step (if required), drip mAb solution onto the tissue section and incubate at RT for 30 min.

## Immunogen

Recombinant protein was used as the immunogen for this hCG alpha antibody.

## Storage

Store the hCG alpha antibody at 2-8°C.