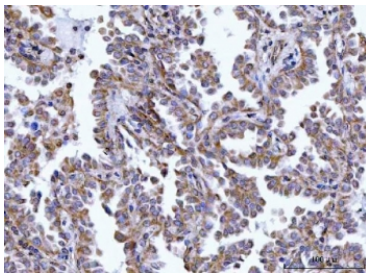


## HAX1 Antibody / HCLS1-associated protein X-1 (RQ7229)

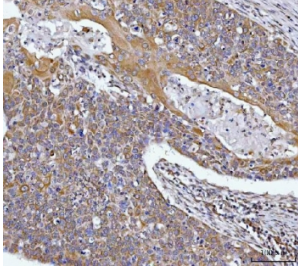
Catalog No.	Formulation	Size
RQ7229	0.5mg/ml if reconstituted with 0.2ml sterile DI water	100 ug

### Bulk quote request

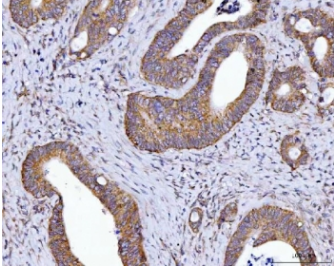
<b>Availability</b>	1-3 business days
<b>Species Reactivity</b>	Human
<b>Format</b>	Antigen affinity purified
<b>Host</b>	Rabbit
<b>Clonality</b>	Polyclonal (rabbit origin)
<b>Isotype</b>	Rabbit IgG
<b>Purity</b>	Antigen affinity purified
<b>Buffer</b>	Lyophilized from 1X PBS with 2% Trehalose
<b>UniProt</b>	O00165
<b>Localization</b>	Nuclear, cytoplasmic, cell membrane
<b>Applications</b>	Western Blot : 0.5-1ug/ml Immunohistochemistry (FFPE) : 2-5ug/ml Flow Cytometry : 1-3ug/million cells Direct ELISA : 0.1-0.5ug/ml
<b>Limitations</b>	This HAX1 antibody is available for research use only.



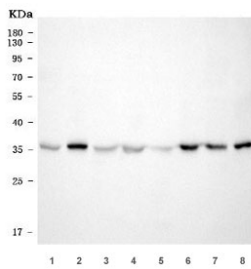
IHC staining of FFPE human lung cancer tissue with HAX1 antibody. HIER: boil tissue sections in pH8 EDTA for 20 min and allow to cool before testing.



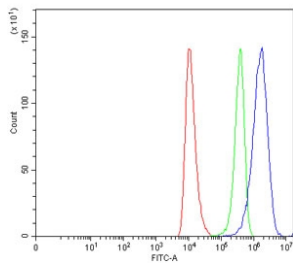
IHC staining of FFPE human esophageal squamous carcinoma tissue with HAX1 antibody. HIER: boil tissue sections in pH8 EDTA for 20 min and allow to cool before testing.



IHC staining of FFPE human colorectal adenocarcinoma tissue with HAX1 antibody. HIER: boil tissue sections in pH8 EDTA for 20 min and allow to cool before testing.



Western blot testing of human 1) MOLT4, 2) Raji, 3) 293T, 4) HeLa, 5) ThP-1, 6) MCF7, 7) Jurkat and 8) PC-3 cell lysate with HAX1 antibody. Predicted molecular weight: 14-32 kDa (multiple isoforms).



Flow cytometry testing of human HEL cells with HAX1 antibody at 1 ug/million cells (blocked with goat sera); Red=cells alone, Green=isotype control, Blue= HAX1 antibody.

## Description

HCLS1-associated protein X-1 is a protein that in humans is encoded by the HAX1 gene. The protein encoded by this gene is known to associate with hematopoietic cell-specific Lyn substrate 1, a substrate of Src family tyrosine kinases. It also interacts with the product of the polycystic kidney disease 2 gene, mutations in which are associated with autosomal-dominant polycystic kidney disease, and with the F-actin-binding protein, cortactin. It was earlier thought that this gene product is mainly localized in the mitochondria, however, recent studies indicate it to be localized in the cell body. Mutations in this gene result in autosomal recessive severe congenital neutropenia, also known as Kostmann disease. Two transcript variants encoding different isoforms have been found for this gene.

## Application Notes

Optimal dilution of the HAX1 antibody should be determined by the researcher.

## Immunogen

Recombinant human protein (amino acids M1-R279) was used as the immunogen for the HAX1 antibody.

## Storage

After reconstitution, the HAX1 antibody can be stored for up to one month at 4oC. For long-term, aliquot and store at -20oC. Avoid repeated freezing and thawing.