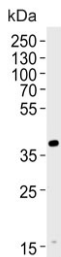


Haptoglobin-related protein Antibody / HPR (F54576)

Catalog No.	Formulation	Size
F54576-0.4ML	In 1X PBS, pH 7.4, with 0.09% sodium azide	0.4 ml
F54576-0.08ML	In 1X PBS, pH 7.4, with 0.09% sodium azide	0.08 ml

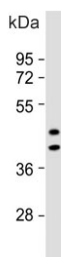
[Bulk quote request](#)

Availability	1-3 business days
Species Reactivity	Human
Format	Purified
Host	Rabbit
Clonality	Polyclonal (rabbit origin)
Isotype	Rabbit Ig
Purity	Antigen affinity purified
UniProt	P00739
Applications	Western Blot : 1:500-1:2000 Immunohistochemistry (FFPE) : 1:25
Limitations	This Haptoglobin-related protein antibody is available for research use only.



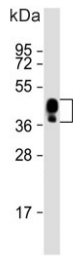
kDa
250-
130-
100-
70-
55-
35-
25-
15-

Western blot testing of human HL60 cell lysate with Haptoglobin-related protein antibody. Predicted molecular weight: 43, 39 kDa (two isoforms).

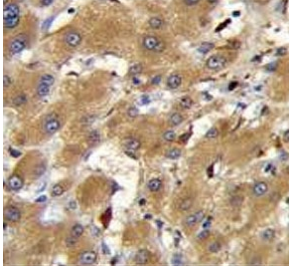


kDa
95-
72-
55-
36-
28-

Western blot testing of human liver lysate with Haptoglobin-related protein antibody. Predicted molecular weight: 43, 39 kDa (two isoforms).



Western blot testing of human plasma lysate with Haptoglobin-related protein antibody.
Predicted molecular weight: 43, 39 kDa (two isoforms).



IHC testing of FFPE human hepatocarcinoma tissue with Haptoglobin-related protein antibody. HIER: steam section in pH6 citrate buffer for 20 min and allow to cool prior to staining.

Description

Ubiquitous transcription factor required for a diverse set of processes. It is a component of the CCR4 complex involved in the control of gene expression (By similarity).

Application Notes

The stated application concentrations are suggested starting points. Titration of the Haptoglobin-related protein antibody may be required due to differences in protocols and secondary/substrate sensitivity.

Immunogen

A portion of amino acids 212-240 from the human protein was used as the immunogen for the Haptoglobin-related protein antibody.

Storage

Aliquot the Haptoglobin-related protein antibody and store frozen at -20°C or colder. Avoid repeated freeze-thaw cycles.