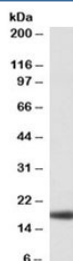


## Haptoglobin Antibody (R35205)

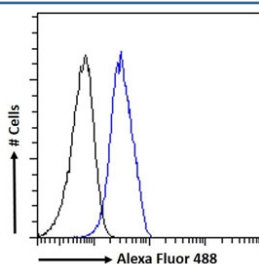
Catalog No.	Formulation	Size
R35205-100UG	0.5 mg/ml in 1X TBS, pH7.3, with 0.5% BSA (US sourced) and 0.02% sodium azide	100 ug

[Bulk quote request](#)

Availability	1-3 business days
Species Reactivity	Human
Format	Antigen affinity purified
Host	Goat
Clonality	Polyclonal (goat origin)
Isotype	Goat Ig
Purity	Antigen affinity
Gene ID	3240
Applications	Western Blot : 0.01-0.03ug/ml Flow Cytometry : 10ug/ml ELISA (peptide) LOD : 1:32000
Limitations	This Haptoglobin antibody is available for research use only.



Western blot testing of human liver lysate with Haptoglobin antibody at 0.01ug/ml.  
Predicted molecular weight: ~15-18 kDa (alpha chain).



FACS testing of fixed and permeabilized human HepG2 cells with Haptoglobin antibody (blue) at 10ug/ml and naive goat Ig (black).

## Description

Additional name(s) for this target protein: HP, BP, HPA1S, HP2ALPHA2, Haptoglobin alpha; HP

## Application Notes

Optimal dilution of the Haptoglobin antibody should be determined by the researcher.

## Immunogen

Amino acids QCKNYYKLRTGD were used as the immunogen for this Haptoglobin antibody.

## Storage

Aliquot and store the Haptoglobin antibody at -20oC.