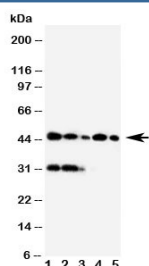


## Haptoglobin Antibody (R30677)

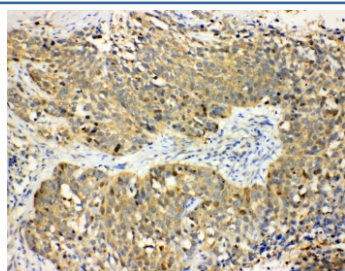
Catalog No.	Formulation	Size
R30677	0.5mg/ml if reconstituted with 0.2ml sterile DI water	100 ug

**Bulk quote request**

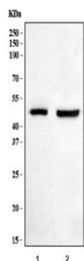
<b>Availability</b>	1-3 business days
<b>Species Reactivity</b>	Human
<b>Format</b>	Antigen affinity purified
<b>Clonality</b>	Polyclonal (rabbit origin)
<b>Isotype</b>	Rabbit IgG
<b>Purity</b>	Antigen affinity
<b>Buffer</b>	Lyophilized from 1X PBS with 2.5% BSA and 0.025% sodium azide/thimerosal
<b>UniProt</b>	P00738
<b>Applications</b>	Western Blot : 0.5-1ug/ml IHC (FFPE) : 0.5-1ug/ml
<b>Limitations</b>	This Haptoglobin antibody is available for research use only.



Western blot testing of Haptoglobin antibody and Lane 1: Raji; 2: HL-60; 3: HUT102; 4: Jurkat; 5: CEM cell lysate. Predicted molecular weight: 35-40 kDa (beta chain), 45-50 kDa (alpha + beta chain).



IHC-P: Haptoglobin antibody testing of human lung cancer tissue



Western blot testing of human 1) placenta and 2) HepG2 cell lysate with Haptoglobin antibody. Predicted molecular weight: 35-40 kDa (beta chain), 45-50 kDa (alpha + beta chain).

## Description

Haptoglobin is a protein that in humans is encoded by the HP gene. It is a plasma glycoprotein that binds free hemoglobin, has a tetrameric structure of 2 alpha and 2 beta polypeptides that are covalently associated by disulfide bonds. Haptoglobin is homologous to serine proteases of the chymotrypsinogen family. There are similarities between the primary structures of the alpha chain and of light chains of gamma globulins. The alpha haptoglobin locus is on the long arm of chromosome 16, where its exact cytogenetic location is 16q22.2. A major function of the protein is to bind hemoglobin(Hb) and form a stable Hp-Hb complex and thereby prevent Hb-induced oxidative tissue damage. Haptoglobin is an unusual secretory protein in that it is proteolytically processed in the endoplasmic reticulum and not in the Golgi.

## Application Notes

The stated application concentrations are suggested starting amounts. Titration of the Haptoglobin antibody may be required due to differences in protocols and secondary/substrate sensitivity.

## Immunogen

An amino acid sequence from the middle region of human HP (DHLKYVMLPVADQDQC) was used as the immunogen for this Haptoglobin antibody.

## Storage

After reconstitution, the Haptoglobin antibody can be stored for up to one month at 4oC. For long-term, aliquot and store at -20oC. Avoid repeated freezing and thawing.