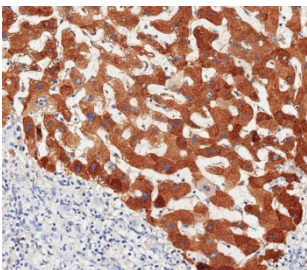


Haptoglobin Antibody / HP (F54341)

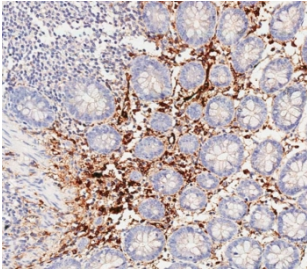
Catalog No.	Formulation	Size
F54341-0.4ML	In 1X PBS, pH 7.4, with 0.09% sodium azide	0.4 ml
F54341-0.08ML	In 1X PBS, pH 7.4, with 0.09% sodium azide	0.08 ml

[Bulk quote request](#)

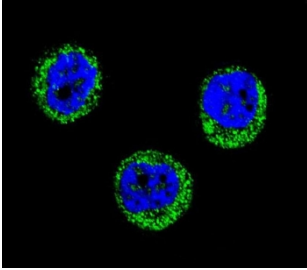
Availability	1-3 business days
Species Reactivity	Human, Mouse
Format	Purified
Host	Rabbit
Clonality	Polyclonal (rabbit origin)
Isotype	Rabbit Ig
Purity	Antigen affinity purified
UniProt	P00738
Applications	Immunohistochemistry (FFPE) : 1:25 Western Blot : 1:500-1:2000 Immunofluorescence : 1:25 Flow Cytometry : 1:25 (1x10e6 cells)
Limitations	This Haptoglobin antibody is available for research use only.



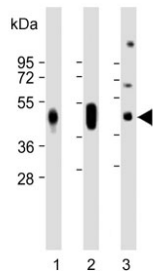
IHC testing of FFPE human hepatocarcinoma tissue with Haptoglobin antibody. HIER: steam section in pH9 EDTA for 20 min and allow to cool prior to staining.



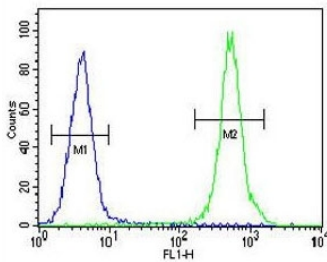
IHC testing of FFPE human colon tissue with Haptoglobin antibody. HIER: steam section in pH9 EDTA for 20 min and allow to cool prior to staining.



Immunofluorescent staining of fixed and permeabilized human MDA-MB-435 cells with Haptoglobin antibody (green) and DAPI nuclear stain (blue).



Western blot testing of 1) human liver, 2) human plasma and 3) mouse plasma lysate with Haptoglobin antibody. Predicted molecular weight ~45 kDa.



Flow cytometry testing of human MDA-MB-435 cells with Haptoglobin antibody; Blue=isotype control, Green= Haptoglobin antibody.

Description

This gene encodes a preproprotein, which is processed to yield both alpha and beta chains, which subsequently combine as a tetramer to produce haptoglobin. Haptoglobin functions to bind free plasma hemoglobin, which allows degradative enzymes to gain access to the hemoglobin, while at the same time preventing loss of iron through the kidneys and protecting the kidneys from damage by hemoglobin. Mutations in this gene and/or its regulatory regions cause ahaptoglobinemia or hypohaptoglobinemia. This gene has also been linked to diabetic nephropathy, the incidence of coronary artery disease in type 1 diabetes, Crohn's disease, inflammatory disease behavior, primary sclerosing cholangitis, susceptibility to idiopathic Parkinson's disease, and a reduced incidence of Plasmodium falciparum malaria. A similar duplicated gene is located next to this gene on chromosome 16. Multiple transcript variants encoding different isoforms have been found for this gene.

Application Notes

The stated application concentrations are suggested starting points. Titration of the Haptoglobin antibody may be required due to differences in protocols and secondary/substrate sensitivity.

Immunogen

A portion of amino acids 296-322 from the human protein was used as the immunogen for the Haptoglobin antibody.

Storage

Aliquot the Haptoglobin antibody and store frozen at -20oC or colder. Avoid repeated freeze-thaw cycles.