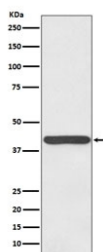


Haptoglobin Antibody [clone AACE-8] (RQ4846)

Catalog No.	Formulation	Size
RQ4846	Antibody in PBS with 0.02% sodium azide, 50% glycerol and 0.4-0.5mg/ml BSA	100 ul

[Bulk quote request](#)

Availability	1-2 weeks
Species Reactivity	Human
Format	Purified
Host	Rabbit
Clonality	Rabbit Monoclonal
Isotype	Rabbit IgG
Clone Name	AACE-8
Purity	Affinity purified
UniProt	P00738
Applications	Western Blot : 1:500-1:2000
Limitations	This Haptoglobin antibody is available for research use only.



Western blot testing of human plasma lysate with Haptoglobin antibody. Predicted molecular weight: 45-50 kDa (alpha + beta chain).

Description

As a result of hemolysis, hemoglobin is found to accumulate in the kidney and is secreted in the urine. Haptoglobin captures, and combines with free plasma hemoglobin to allow hepatic recycling of heme iron and to prevent kidney damage. [UniProt]

Application Notes

Optimal dilution of the Haptoglobin antibody should be determined by the researcher.

Immunogen

A synthetic peptide specific to human Haptoglobin / HP was used as the immunogen for the Haptoglobin antibody.

Storage

Store the Haptoglobin antibody at -20oC.