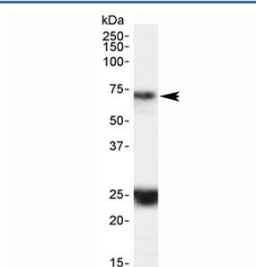


HAP1 Antibody (R35816)

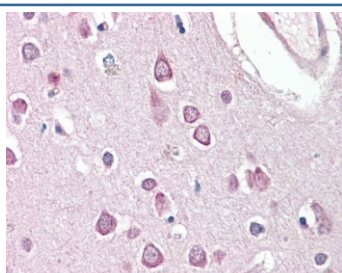
Catalog No.	Formulation	Size
R35816-100UG	0.5 mg/ml in 1X TBS, pH7.3, with 0.5% BSA (US sourced) and 0.02% sodium azide	100 ug

[Bulk quote request](#)

Availability	1-3 business days
Species Reactivity	Human
Format	Antigen affinity purified
Host	Goat
Clonality	Polyclonal (goat origin)
Isotype	Goat Ig
Purity	Antigen affinity
Gene ID	9001
Applications	Western Blot : 0.1-0.3ug/ml IHC (FFPE) : 3.75ug/ml ELISA (peptide) LOD : 1:32000
Limitations	This HAP1 antibody is available for research use only.



Western blot testing of human hippocampus lysate with HAP1 antibody at 0.1ug/ml. The expected ~70 kDa band and the additional ~25 kDa band are both blocked by the immunizing peptide.



IHC testing of FFPE human brain (cortex) tissue with HAP1 antibody at 3.75ug/ml. Required HIER: steamed antigen retrieval with pH6 citrate buffer; AP-staining.

Description

Additional name(s) for this target protein: Huntingtin-associated protein 1

Application Notes

Optimal dilution of the HAP1 antibody should be determined by the researcher.

Immunogen

Amino acids RYDFRYSEDREQ were used as the immunogen for this HAP1 antibody.

Storage

Aliquot and store the HAP1 antibody at -20oC.