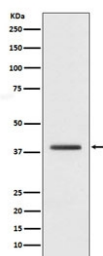


H2AFY Antibody / Macro H2A.1 [clone ADDI-8] (RQ4775)

Catalog No.	Formulation	Size
RQ4775	Antibody in PBS with 0.02% sodium azide, 50% glycerol and 0.4-0.5mg/ml BSA	100 ul

[Bulk quote request](#)

Availability	1-2 weeks
Species Reactivity	Human
Format	Purified
Host	Rabbit
Clonality	Rabbit Monoclonal
Isotype	Rabbit IgG
Clone Name	ADDI-8
Purity	Affinity purified
UniProt	O75367
Applications	Western Blot : 1:1000-1:5000
Limitations	This H2AFY antibody is available for research use only.



Western blot testing of human HepG2 cell lysate with H2AFY antibody. Predicted molecular weight ~40 kDa.

Description

'Core histone macro-H2A.1' is involved in stable X chromosome inactivation. Inhibits the binding of transcription factors and interferes with the activity of remodeling SWI/SNF complexes. Inhibits histone acetylation by EP300 and recruits class I HDACs, which induces an hypoacetylated state of chromatin.

Application Notes

Optimal dilution of the H2AFY antibody should be determined by the researcher.

Immunogen

A synthetic peptide specific to human H2AFY / macroH2A.1 was used as the immunogen for the H2AFY antibody.

Storage

Store the H2AFY antibody at -20oC.