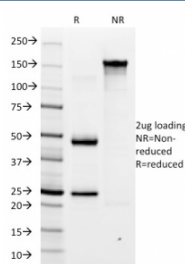


H. pylori Antibody / Helicobacter pylori [clone HP/1335] (V5375)

Catalog No.	Formulation	Size
V5375-100UG	0.2 mg/ml in 1X PBS with 0.1 mg/ml BSA (US sourced), 0.05% sodium azide	100 ug
V5375-20UG	0.2 mg/ml in 1X PBS with 0.1 mg/ml BSA (US sourced), 0.05% sodium azide	20 ug
V5375SAF-100UG	1 mg/ml in 1X PBS; BSA free, sodium azide free	100 ug

[Bulk quote request](#)

Availability	1-3 business days
Species Reactivity	Human
Format	Purified
Clonality	Monoclonal (mouse origin)
Isotype	Mouse IgG1, kappa
Clone Name	HP/1335
Purity	Protein A/G affinity
Applications	Flow Cytometry : 1-2ug/million cells Immunofluorescence : 1-3ug/ml
Limitations	This H. pylori antibody is available for research use only.



SDS-PAGE analysis of purified, BSA-free H. pylori antibody (clone HP/1335) as confirmation of integrity and purity.

Description

The spiral shaped bacterium *Helicobacter pylori* is strongly associated with inflammation of the stomach and is also implicated in the development of gastric malignancy. *H. pylori* is known to cause peptic ulcers and chronic gastritis in human. It is associated with duodenal ulcers and may be involved in development of adenocarcinoma and low-grade lymphoma of mucosa associated lymphoid tissue in the stomach. This antibody stains the individual *H. pylori* bacterium when it presents on the surface of the epithelium or in the cytoplasm of the epithelial cells in biopsy tissue sections from the antrum and body of the stomach.

Application Notes

Optimal dilution of the H. pylori antibody should be determined by the researcher.

Immunogen

Total sonicate of Helicobacter pylori was used as the immunogen for the H. pylori antibody.

Storage

Aliquot the H. pylori antibody and store frozen at -20oC or colder. Avoid repeated freeze-thaw cycles.