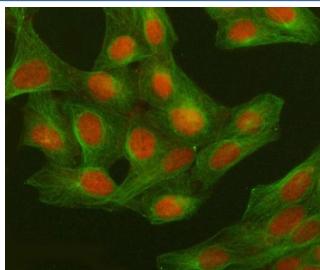


GWL Antibody / Greatwall / MASTL (RQ7765)

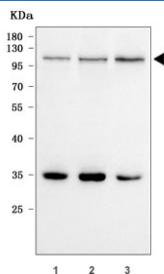
Catalog No.	Formulation	Size
RQ7765	0.5mg/ml if reconstituted with 0.2ml sterile DI water	100 ug

Bulk quote request

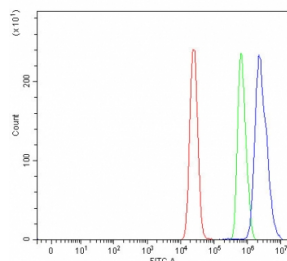
Availability	1-3 business days
Species Reactivity	Human
Format	Antigen affinity purified
Clonality	Polyclonal (rabbit origin)
Isotype	Rabbit IgG
Purity	Antigen affinity purified
Buffer	Lyophilized from 1X PBS with 2% Trehalose
UniProt	Q96GX5
Localization	Nuclear, cytoplasmic
Applications	Western Blot : 0.5-1ug/ml Immunofluorescence : 5ug/ml Flow Cytometry : 1-3ug/million cells Direct ELISA : 0.1-0.5ug/ml
Limitations	This GWL antibody is available for research use only.



Immunofluorescent staining of FFPE human U-2 OS cells with GWL antibody (red) and Alpha Tubulin mAb (green). HIER: steam section in pH6 citrate buffer for 20 min.



Western blot testing of human 1) HepG2, 2) 293T and 3) HeLa cell lysate with GWL antibody. Predicted molecular weight ~97 kDa.



Flow cytometry testing of human MCF7 cells with GWL antibody at 1ug/million cells (blocked with goat sera); Red=cells alone, Green=isotype control, Blue= GWL antibody.

Description

This gene encodes a microtubule-associated serine/threonine kinase. Mutations at this locus have been associated with autosomal dominant thrombocytopenia, also known as thrombocytopenia-2. Alternatively spliced transcript variants have been described for this locus.

Application Notes

Optimal dilution of the GWL antibody should be determined by the researcher.

Immunogen

E. coli-derived recombinant human protein (amino acids K179-L872) was used as the immunogen for the GWL antibody.

Storage

After reconstitution, the GWL antibody can be stored for up to one month at 4oC. For long-term, aliquot and store at -20oC. Avoid repeated freezing and thawing.