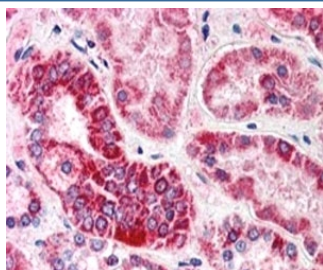


GULP1 Antibody / CED6 (R33786)

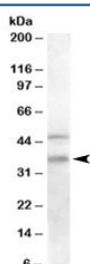
Catalog No.	Formulation	Size
R33786-100UG	0.5 mg/ml in 1X TBS, pH7.3, with 0.5% BSA (US sourced) and 0.02% sodium azide	100 ug

[Bulk quote request](#)

Availability	1-3 business days
Species Reactivity	Human
Predicted Reactivity	Mouse, Rat, Dog
Format	Antigen affinity purified
Clonality	Polyclonal (goat origin)
Isotype	Goat Ig
Purity	Antigen affinity
Gene ID	51454
Applications	Western Blot : 0.2-0.6ug/ml Immunohistochemistry (FFPE) : 5-10 ug/ml ELISA (peptide) LOD : 1:64000
Limitations	This GULP1 antibody is available for research use only.



IHC staining of FFPE human kidney with GULP1 antibody at 5ug/ml. HIER: steamed with pH6 citrate buffer, AP-staining.



Western blot testing of human placenta lysate with GULP1 antibody at 0.2ug/ml. The expected ~35kDa band and the additional ~46kDa band are both blocked by the immunizing peptide.

Description

Additional name(s) for this target protein: Engulfment adaptor PTB domain containing 1; CED6

Application Notes

Optimal dilution of the GULP1 antibody should be determined by the researcher.

Immunogen

Amino acids EGTVFCLDPLDSRC were used as the immunogen for this GULP1 antibody.

Storage

Aliquot and store the GULP1 antibody at -20oC.