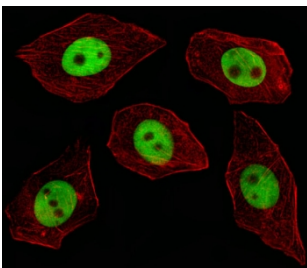


GTF2I Antibody / TFII-I (F54433)

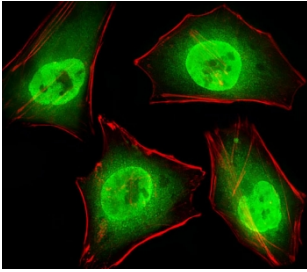
Catalog No.	Formulation	Size
F54433-0.4ML	In 1X PBS, pH 7.4, with 0.09% sodium azide	0.4 ml
F54433-0.08ML	In 1X PBS, pH 7.4, with 0.09% sodium azide	0.08 ml

[Bulk quote request](#)

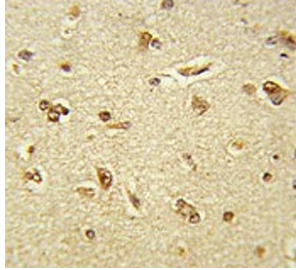
Availability	1-3 business days
Species Reactivity	Human
Format	Purified
Host	Rabbit
Clonality	Polyclonal (rabbit origin)
Isotype	Rabbit Ig
Purity	Antigen affinity purified
UniProt	P78347
Applications	Immunofluorescence : 1:25 Western Blot : 1:500-1:2000 Flow Cytometry : 1:25 (1x10 ⁶ cells) Immunohistochemistry (FFPE) : 1:25
Limitations	This GTF2I antibody is available for research use only.



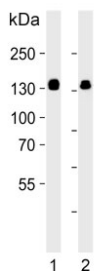
Immunofluorescent staining of fixed and permeabilized human A549 cells with GTF2I antibody (green) and anti-Actin (red).



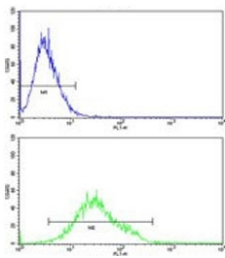
Immunofluorescent staining of human HeLa cells with GTF2I antibody (green) and anti-Actin (red).



IHC testing of FFPE human brain tissue with GTF2I antibody. HIER: steam section in pH6 citrate buffer for 20 min and allow to cool prior to staining.



Western blot testing of human 1) A431 and 2) HeLa lysate with GTF2I antibody. Predicted molecular weight ~112 kDa but can be observed at up to ~135 kDa.



Flow cytometry testing of human K562 cells with GTF2I antibody; Blue=isotype control, Green= GTF2I antibody.

Description

GTF2I is a multifunctional phosphoprotein with roles in transcription and signal transduction. It is deleted in Williams-Beuren syndrome, a multisystem developmental disorder caused by the deletion of contiguous genes at chromosome 7q11.23.

Application Notes

The stated application concentrations are suggested starting points. Titration of the GTF2I antibody may be required due to differences in protocols and secondary/substrate sensitivity.

Immunogen

A portion of amino acids 956-985 from the human protein was used as the immunogen for the GTF2I antibody.

Storage

Aliquot the GTF2I antibody and store frozen at -20°C or colder. Avoid repeated freeze-thaw cycles.

