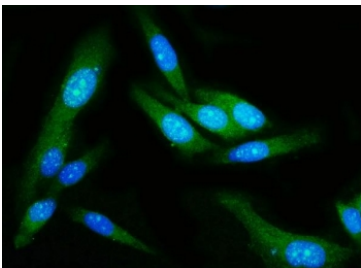


GSDMD Antibody / Gasdermin D [clone 6D11] (RQ7955)

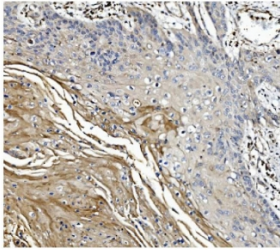
Catalog No.	Formulation	Size
RQ7955	0.5mg/ml if reconstituted with 0.2ml sterile DI water	100 ug

[Bulk quote request](#)

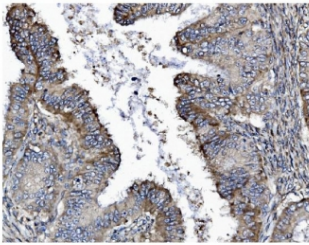
Availability	1-3 business days
Species Reactivity	Human
Format	Antigen affinity purified
Host	Mouse
Clonality	Monoclonal (mouse origin)
Isotype	Mouse IgG2b
Clone Name	6D11
Purity	Antigen affinity purified
Buffer	Lyophilized from 1X PBS with 2% Trehalose
UniProt	P57764
Localization	Nucleus, cytoplasm, cell membrane, secreted
Applications	Western Blot : 0.5-1ug/ml Immunohistochemistry (FFPE) : 2-5ug/ml Immunofluorescence (FFPE) : 5ug/ml Flow Cytometry : 1-3ug/million cells
Limitations	This GSDMD antibody is available for research use only.



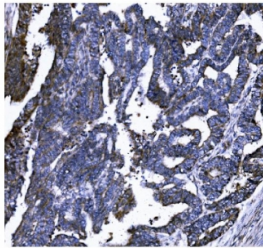
Immunofluorescent staining of FFPE human PC-3 cells with GSDMD antibody (green) and DAPI nuclear stain (blue). HIER: steam section in pH6 citrate buffer for 20 min.



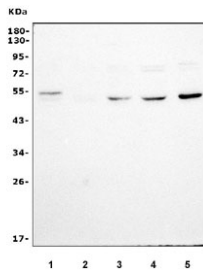
IHC staining of FFPE human esophageal squamous carcinoma tissue with GSDMD antibody. HIER: boil tissue sections in pH8 EDTA for 20 min and allow to cool before testing.



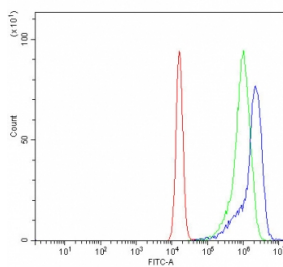
IHC staining of FFPE human cervical intraepithelial neoplasia tissue with GSDMD antibody. HIER: boil tissue sections in pH8 EDTA for 20 min and allow to cool before testing.



IHC staining of FFPE human cervical cancer tissue with GSDMD antibody. HIER: boil tissue sections in pH8 EDTA for 20 min and allow to cool before testing.



Western blot testing of human 1) ThP-1, 2) SW620, 3) Jurkat, 4) U-87 MG and 5) PC-3 cell lysate with GSDMD antibody. Predicted molecular weight ~53 kDa.



Flow cytometry testing of human Jurkat cells with GSDMD antibody at 1ug/million cells (blocked with goat sera); Red=cells alone, Green=isotype control, Blue= GSDMD antibody.

Description

Gasdermin D is a precursor of a pore-forming protein that plays a key role in host defense against pathogen infection and danger signals. [UniProt]

Application Notes

Optimal dilution of the GSDMD antibody should be determined by the researcher.

Immunogen

E. coli-derived recombinant human protein (amino acids M1-H484) was used as the immunogen for the GSDMD antibody.

Storage

After reconstitution, the GSDMD antibody can be stored for up to one month at 4°C. For long-term, aliquot and store at -20°C. Avoid repeated freezing and thawing.