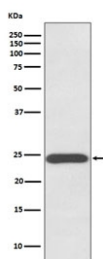


Growth Hormone Antibody (pituitary) [clone AADG-7] (RQ4961)

Catalog No.	Formulation	Size
RQ4961	Antibody in PBS with 0.02% sodium azide, 50% glycerol and 0.4-0.5mg/ml BSA	100 ul

[Bulk quote request](#)

Availability	1-2 weeks
Species Reactivity	Human
Format	Purified
Clonality	Rabbit Monoclonal
Isotype	Rabbit IgG
Clone Name	AADG-7
Purity	Affinity purified
UniProt	P01241
Applications	Western Blot : 1:500-1:2000
Limitations	This Growth Hormone antibody is available for research use only.



Western blot testing of human placenta lysate with Growth Hormone antibody. Predicted molecular weight: 22-25 kDa.

Description

Somatotropin / Growth Hormone 1 / GH1 plays an important role in growth control. Its major role in stimulating body growth is to stimulate the liver and other tissues to secrete IGF-1. It stimulates both the differentiation and proliferation of myoblasts. It also stimulates amino acid uptake and protein synthesis in muscle and other tissues. [UniProt]

Application Notes

Optimal dilution of the Growth Hormone antibody should be determined by the researcher.

Immunogen

A synthetic peptide specific to human Growth Hormone / GH1 was used as the immunogen for the Growth Hormone antibody.

Storage

Store the Growth Hormone antibody at -20oC.