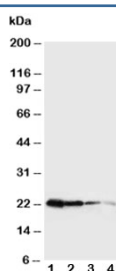


Growth Hormone Antibody (Mouse) (R30126)

| Catalog No. | Formulation | Size |
|-------------|---|--------|
| R30126 | 0.5mg/ml if reconstituted with 0.2ml sterile DI water | 100 ug |

[Bulk quote request](#)

| | |
|---------------------------|--|
| Availability | 1-3 business days |
| Species Reactivity | Mouse |
| Format | Antigen affinity purified |
| Host | Rabbit |
| Clonality | Polyclonal (rabbit origin) |
| Isotype | Rabbit IgG |
| Purity | Antigen affinity |
| Buffer | Lyophilized from 1X PBS with 0.025% sodium azide |
| UniProt | P06880 |
| Applications | Western Blot : 0.5-1ug/ml |
| Limitations | This Growth Hormone antibody is available for research use only. |



Western blot testing of Growth Hormone antibody and Lane 1: Recombinant mouse GH protein 10ng; 2: 5ng; 3: 2.5ng; 4: 1.25ng

Description

Growth Hormone (GH) is mapped to 17q22-q24. Growth hormone(GH) is synthesized by acidophilic or somatotrophic cells of the anterior pituitary gland. It binds two receptor molecules and thereby induces signal transduction through receptor dimerization. At high concentrations, GH acts as an antagonist because of a large difference in affinities at the respective binding sites.

Application Notes

The stated application concentrations are suggested starting points. Titration of the Growth Hormone antibody may be required due to differences in protocols and secondary/substrate sensitivity.

Immunogen

Mouse partial recombinant protein (AA 27-216) was used as the immunogen for this Growth Hormone antibody .

Storage

After reconstitution, the Growth Hormone antibody can be stored for up to one month at 4oC. For long-term, aliquot and store at -20oC. Avoid repeated freezing and thawing.