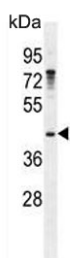


## Growth arrest-specific protein 1 Antibody / GAS1 (F54621)

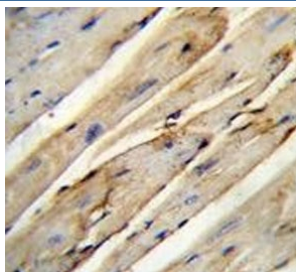
Catalog No.	Formulation	Size
F54621-0.4ML	In 1X PBS, pH 7.4, with 0.09% sodium azide	0.4 ml
F54621-0.08ML	In 1X PBS, pH 7.4, with 0.09% sodium azide	0.08 ml

[Bulk quote request](#)

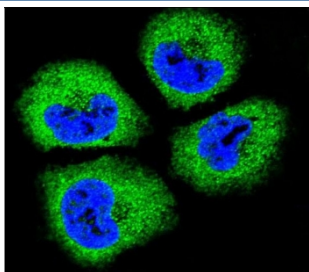
<b>Availability</b>	1-3 business days
<b>Species Reactivity</b>	Human, Mouse
<b>Format</b>	Purified
<b>Host</b>	Rabbit
<b>Clonality</b>	Polyclonal (rabbit origin)
<b>Isotype</b>	Rabbit Ig
<b>Purity</b>	Purified
<b>UniProt</b>	P54826
<b>Applications</b>	Flow Cytometry : 1:25 (1x10e6 cells) Immunofluorescence : 1:25 Immunohistochemistry (FFPE) : 1:25 Western Blot : 1:500-1:2000
<b>Limitations</b>	This Growth arrest-specific protein 1 antibody is available for research use only.



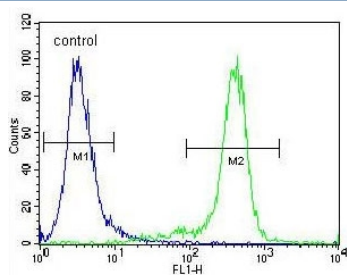
Western blot testing of human NCI-H460 cell lysate with Growth arrest-specific protein 1 antibody. Predicted molecular weight ~36 kDa but may be observed at higher molecular weights due to glycosylation.



IHC testing of FFPE mouse heart tissue with Growth arrest-specific protein 1 antibody. HIER: steam section in pH6 citrate buffer for 20 min and allow to cool prior to staining.



Immunofluorescent staining of human NCI-H460 cells with Growth arrest-specific protein 1 antibody (green) and DAPI nuclear stain (blue).



Flow cytometry testing of human NCI-H460 cells with Growth arrest-specific protein 1 antibody; Blue=isotype control, Green= Growth arrest-specific protein 1 antibody.

## Description

Growth arrest-specific 1 plays a role in growth suppression. GAS1 blocks entry to S phase and prevents cycling of normal and transformed cells. Gas1 is a putative tumor suppressor gene.

## Application Notes

The stated application concentrations are suggested starting points. Titration of the Growth arrest-specific protein 1 antibody may be required due to differences in protocols and secondary/substrate sensitivity.

## Immunogen

A portion of amino acids 95-127 from the human protein was used as the immunogen for the Growth arrest-specific protein 1 antibody.

## Storage

Aliquot the Growth arrest-specific protein 1 antibody and store frozen at -20°C or colder. Avoid repeated freeze-thaw cycles.

