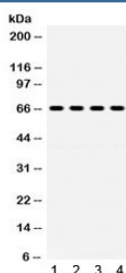


GRK6 Antibody (R32102)

Catalog No.	Formulation	Size
R32102	0.5mg/ml if reconstituted with 0.2ml sterile DI water	100 ug

Bulk quote request

Availability	1-3 business days
Species Reactivity	Human, Rat
Format	Antigen affinity purified
Clonality	Polyclonal (rabbit origin)
Isotype	Rabbit IgG
Purity	Antigen affinity
Buffer	Lyophilized from 1X PBS with 2.5% BSA and 0.025% sodium azide
UniProt	P43250
Applications	Western Blot : 0.1-0.5ug/ml
Limitations	This GRK6 antibody is available for research use only.



Western blot testing of 1) rat lung, human 2) HeLa, 3) K562 and 4) Jurkat lysate with GRK6 antibody. Expected/observed molecular weight ~66 kDa.

Description

G protein-coupled receptor kinase 6 is an enzyme that in humans is encoded by the GRK6 gene. It is mapped to 5q35. This gene encodes a member of the guanine nucleotide-binding protein (G protein)-coupled receptor kinase subfamily of the Ser/Thr protein kinase family. The protein phosphorylates the activated forms of G protein-coupled receptors thus initiating their deactivation. Several transcript variants encoding different isoforms have been described for this gene. Also, GRK6 appears to be involved in responses to morphine.

Application Notes

Optimal dilution of the GRK6 antibody should be determined by the researcher.

Immunogen

Amino acids QSPFQQRKKKIKREEVERLVKEVPPEEYSERFSPQAR of human GRK6 were used as the immunogen for the GRK6 antibody.

Storage

After reconstitution, the GRK6 antibody can be stored for up to one month at 4oC. For long-term, aliquot and store at -20oC. Avoid repeated freezing and thawing.