

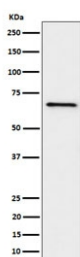
GRK6 Antibody / G protein coupled receptor kinase 6 [clone 28G47] (RQ8386)

Catalog No.	Formulation	Size
RQ8386	Antibody in PBS with 0.02% sodium azide, 50% glycerol and 0.4-0.5mg/ml BSA	100 ul

Recombinant **RABBIT MONOCLONAL**

[Bulk quote request](#)

Availability	1-3 business days
Species Reactivity	Human
Format	Purified
Clonality	Recombinant Rabbit Monoclonal
Isotype	Rabbit IgG
Clone Name	28G47
Purity	Affinity chromatography
UniProt	P43250
Applications	Western Blot : 1:500-1:2000
Limitations	This GRK6 antibody is available for research use only.



Western blot testing of human Ramos cell lysate with GRK6 antibody. Predicted molecular weight ~66 kDa.

Description

Specifically phosphorylates the activated forms of G protein-coupled receptors. Such receptor phosphorylation initiates beta-arrestin-mediated receptor desensitization, internalization, and signaling events leading to their desensitization. [UniProt]

Application Notes

Optimal dilution of the GRK6 antibody should be determined by the researcher.

Immunogen

A synthetic peptide derived from human GRK6 was used as the immunogen for the GRK6 antibody.

Storage

Store the GRK6 antibody at -20oC.