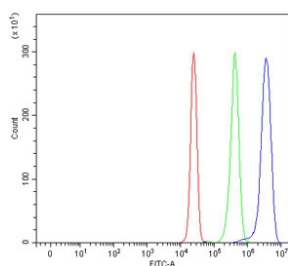


## GRIPAP1 Antibody / GRASP 1 / GRIP1-associated protein 1 (RQ7179)

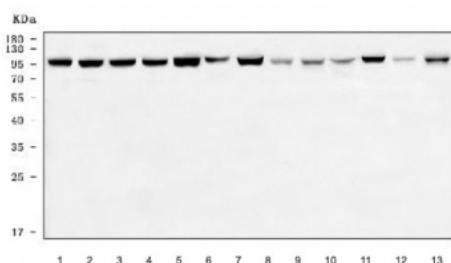
Catalog No.	Formulation	Size
RQ7179	0.5mg/ml if reconstituted with 0.2ml sterile DI water	100 ug

**Bulk quote request**

<b>Availability</b>	1-3 business days
<b>Species Reactivity</b>	Human, Mouse, Rat
<b>Format</b>	Antigen affinity purified
<b>Host</b>	Rabbit
<b>Clonality</b>	Polyclonal (rabbit origin)
<b>Isotype</b>	Rabbit IgG
<b>Purity</b>	Antigen affinity purified
<b>Buffer</b>	Lyophilized from 1X PBS with 2% Trehalose
<b>UniProt</b>	Q4V328
<b>Applications</b>	Western Blot : 0.5-1ug/ml Flow Cytometry : 1-3ug/million cells Direct ELISA : 0.1-0.5ug/ml
<b>Limitations</b>	This GRIPAP1 antibody is available for research use only.



Flow cytometry testing of human HepG2 cells with GRIPAP1 antibody at 1ug/million cells (blocked with goat sera); Red=cells alone, Green=isotype control, Blue= GRIPAP1 antibody.



Western blot testing of 1) human HeLa, 2) human HepG2, 3) human RT4, 4) human MCF-7, 5) human SiHa, 6) human T-47D, 7) rat brain, 8) rat pancreas, 9) rat testis, 10) rat PC-12, 11) mouse brain, 12) mouse pancreas and 13) mouse NIH 3T3 cell lysate with GRIPAP1 antibody. Predicted molecular weight ~96 kDa.

## Description

GRIP1-associated protein 1 is a protein that in humans is encoded by the GRIPAP1 gene. This gene encodes a guanine nucleotide exchange factor for the Ras family of small G proteins (RasGEF). The encoded protein interacts in a complex with glutamate receptor interacting protein 1 (GRIP1) and plays a role in the regulation of AMPA receptor function.

## Application Notes

Optimal dilution of the GRIPAP1 antibody should be determined by the researcher.

## Immunogen

Recombinant human protein (amino acids R42-S841) was used as the immunogen for the GRIPAP1 antibody.

## Storage

After reconstitution, the GRIPAP1 antibody can be stored for up to one month at 4°C. For long-term, aliquot and store at -20°C. Avoid repeated freezing and thawing.