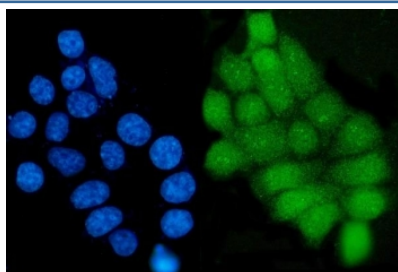


## GRHL1 Antibody / Grainyhead-like protein 1 (RQ6180)

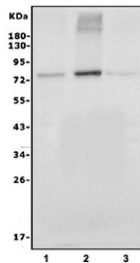
Catalog No.	Formulation	Size
RQ6180	0.5mg/ml if reconstituted with 0.2ml sterile DI water	100 ug

**Bulk quote request**

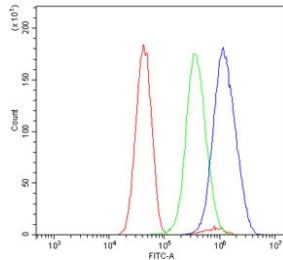
<b>Availability</b>	1-3 business days
<b>Species Reactivity</b>	Human
<b>Format</b>	Antigen affinity purified
<b>Clonality</b>	Polyclonal (rabbit origin)
<b>Isotype</b>	Rabbit IgG
<b>Purity</b>	Affinity purified
<b>Buffer</b>	Lyophilized from 1X PBS with 2% Trehalose and 0.0125% sodium azide
<b>UniProt</b>	Q9NZI5
<b>Localization</b>	Nuclear
<b>Applications</b>	Western Blot : 1-2ug/ml Flow Cytometry : 1-3ug/million cells Immunofluorescence : 5ug/ml Direct ELISA : 0.1-0.5ug/ml
<b>Limitations</b>	This GRHL1 antibody is available for research use only.



Immunofluorescent staining of FFPE human MCF7 cells with GRHL1 antibody (green) and DAPI nuclear stain (blue). HIER: steam section in pH6 citrate buffer for 20 min.



Western blot testing of human 1) T-47D, 2) MDA-MB-453 and 3) MCF7 cell lysate with GRHL1 antibody. Predicted molecular weight ~70 kDa.



Flow cytometry testing of human U-251 cells with GRHL1 antibody at 1ug/million cells (blocked with goat sera); Red=cells alone, Green=isotype control, Blue= GRHL1 antibody.

## Description

This gene encodes a member of the grainyhead family of transcription factors. The encoded protein can exist as a homodimer or can form heterodimers with sister-of-mammalian grainyhead or brother-of-mammalian grainyhead. This protein functions as a transcription factor during development.

## Application Notes

Optimal dilution of the GRHL1 antibody should be determined by the researcher.

## Immunogen

A human recombinant partial protein (amino acids M1-I618) was used as the immunogen for the GRHL1 antibody.

## Storage

After reconstitution, the GRHL1 antibody can be stored for up to one month at 4oC. For long-term, aliquot and store at -20oC. Avoid repeated freezing and thawing.