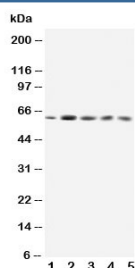


## GRB7 Antibody (R30667)

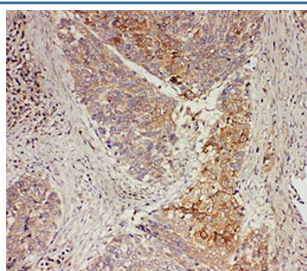
Catalog No.	Formulation	Size
R30667	0.5mg/ml if reconstituted with 0.2ml sterile DI water	100 ug

**Bulk quote request**

<b>Availability</b>	1-3 business days
<b>Species Reactivity</b>	Human, Mouse, Rat
<b>Format</b>	Antigen affinity purified
<b>Clonality</b>	Polyclonal (rabbit origin)
<b>Isotype</b>	Rabbit IgG
<b>Purity</b>	Antigen affinity
<b>Buffer</b>	Lyophilized from 1X PBS with 2.5% BSA and 0.025% sodium azide/thimerosal
<b>UniProt</b>	Q14451
<b>Applications</b>	Western Blot : 0.5-1ug/ml IHC (FFPE) : 0.5-1ug/ml
<b>Limitations</b>	This GRB7 antibody is available for research use only.



Western blot testing of GRB7 antibody and Lane 1: rat testis; 2: SMMC-7721; 3: HeLa; 4: A549; 5: SW620; Predicted/observed molecular weight: 60kDa.



IHC-P: GRB7 antibody testing of human oesophagus squama cancer tissue

## Description

Growth factor receptor-bound protein 7 is a protein which in humans is encoded by the GRB7 gene. The product of this gene belongs to a small family of adaptor proteins that are known to interact with a number of receptor tyrosine kinases and signaling molecules. This gene encodes a growth factor receptor-binding protein that interacts with epidermal growth factor receptor (EGFR) and ephrin receptors. The protein plays a role in the integrin signaling pathway and cell migration by binding with focal adhesion kinase (FAK). Alternative splicing results in multiple transcript variants encoding different isoforms, although the full-length nature of only two of the variants have been determined to date. GRB7 is an SH2-domain adaptor protein that binds to receptor tyrosine kinases and provides the intra-cellular direct link to the Ras proto-oncogene. Human GRB7 is located on the long arm of chromosome 17, next to the ERBB2 (alias HER2/neu) proto-oncogene. These two genes are commonly co-amplified (present in excess copies) in breast cancers. GRB7 is thought to be involved in migration, is well known to be over-expressed in testicular germ cell tumors, esophageal cancers, and gastric cancers.

## Application Notes

The stated application concentrations are suggested starting amounts. Titration of the GRB7 antibody may be required due to differences in protocols and secondary/substrate sensitivity.

## Immunogen

An amino acid sequence from the middle region of human GRB7 (ARHVCEMLVQRAHALSDE) was used as the immunogen for this GRB7 antibody (100% homologous in human, mouse and rat).

## Storage

After reconstitution, the GRB7 antibody can be stored for up to one month at 4°C. For long-term, aliquot and store at -20°C. Avoid repeated freezing and thawing.