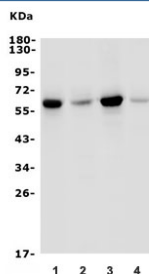


GRB7 Antibody / Growth factor receptor-bound protein 7 (RQ5729)

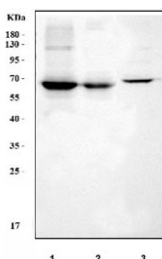
Catalog No.	Formulation	Size
RQ5729	0.5mg/ml if reconstituted with 0.2ml sterile DI water	100 ug

Bulk quote request

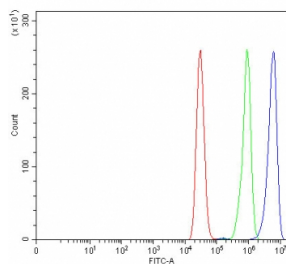
Availability	1-3 business days
Species Reactivity	Human, Mouse
Format	Antigen affinity purified
Host	Rabbit
Clonality	Polyclonal (rabbit origin)
Isotype	Rabbit IgG
Purity	Affinity purified
Buffer	Lyophilized from 1X PBS with 2% Trehalose
UniProt	Q14451
Applications	Western Blot : 0.5-1ug/ml Flow Cytometry : 1-3ug/million cells Direct ELISA : 0.1-0.5ug/ml
Limitations	This GRB7 antibody is available for research use only.



Western blot testing of human 1) HepG2, 2) K562, 3) SW620 and 4) A431 lysate with GRB7 antibody. Predicted molecular weight: 60 kDa.



Western blot testing of 1) human A549, 2) human K562 and 3) mouse kidney tissue lysate with GRB7 antibody. Predicted molecular weight: 60 kDa.



Flow cytometry testing of human MCF7 cells with GRB7 antibody at 1ug/million cells (blocked with goat sera); Red=cells alone, Green=isotype control, Blue= GRB7 antibody.

Description

GRB7, growth factor receptor-bound protein 7, is a protein which in humans is encoded by the GRB7 gene. The product of this gene belongs to a small family of adaptor proteins that are known to interact with a number of receptor tyrosine kinases and signaling molecules. This gene encodes a growth factor receptor-binding protein that interacts with epidermal growth factor receptor (EGFR) and ephrin receptors. The protein plays a role in the integrin signaling pathway and cell migration by binding with focal adhesion kinase(FAK). Alternative splicing results in multiple transcript variants encoding different isoforms, although the full-length nature of only two of the variants have been determined to date. GRB7 is an SH2-domain adaptor protein that binds to receptor tyrosine kinases and provides the intra-cellular direct link to the Ras proto-oncogene. Human GRB7 is located on the long arm of chromosome 17, next to the ERBB2(alias HER2/neu) proto-oncogene. These two genes are commonly co-amplified(present in excess copies) in breast cancers. GRB7 though to be involved in migration, is well known to be over-expressed in testicular germ cell tumors, esophageal cancers, and gastric cancers.

Application Notes

Optimal dilution of the GRB7 antibody should be determined by the researcher.

Immunogen

Recombinant human protein (amino acids R29-S256) was used as the immunogen for the GRB7 antibody.

Storage

After reconstitution, the GRB7 antibody can be stored for up to one month at 4oC. For long-term, aliquot and store at -20oC. Avoid repeated freezing and thawing.