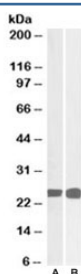


GRB2 Antibody (R35139)

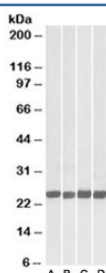
Catalog No.	Formulation	Size
R35139-100UG	0.5 mg/ml in 1X TBS, pH7.3, with 0.5% BSA (US sourced) and 0.02% sodium azide	100 ug

[Bulk quote request](#)

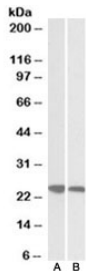
Availability	1-3 business days
Species Reactivity	Human, Mouse, Rat, Pig
Predicted Reactivity	Cow, Dog
Format	Antigen affinity purified
Clonality	Polyclonal (goat origin)
Isotype	Goat Ig
Purity	Antigen affinity
Gene ID	2885
Applications	Western Blot : 0.05-0.15ug/ml Immunohistochemistry (FFPE) : suitable ELISA (peptide) LOD : 1:32000
Limitations	This GRB2 antibody is available for research use only.



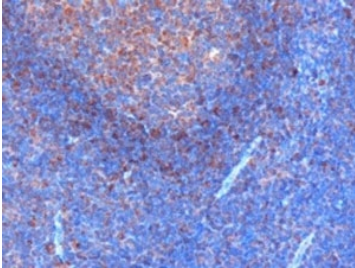
Western blot of human thymus (A) and MOLT4 (B) lysates with GRB2 antibody at 0.05ug/ml. Predicted molecular weight ~25kDa.



Western blot testing of A) mouse brain, B) rat brain, C) mouse spleen and D) rat spleen lysate with GRB2 antibody at 0.05ug/ml.



Western blot of human (A) and pig (B) spleen lysates with GRB2 antibody at 0.03ug/ml.



IHC staining of FFPE human tonsil with GRB2 antibody at 0.3ug/ml. HIER: microwaved with pH6 citrate buffer, HRP-staining.

Description

Additional name(s) for this target protein: Growth factor receptor-bound protein 2

Application Notes

Optimal dilution of the GRB2 antibody should be determined by the researcher.

Immunogen

Amino acids PRNYVTPVNRNV were used as the immunogen for this GRB2 antibody.

Storage

Aliquot and store the GRB2 antibody at -20oC.