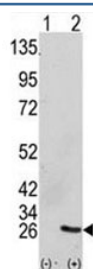


GRB2 Antibody (F49558)

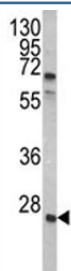
Catalog No.	Formulation	Size
F49558-0.4ML	In 1X PBS, pH 7.4, with 0.09% sodium azide	0.4 ml
F49558-0.08ML	In 1X PBS, pH 7.4, with 0.09% sodium azide	0.08 ml

[Bulk quote request](#)

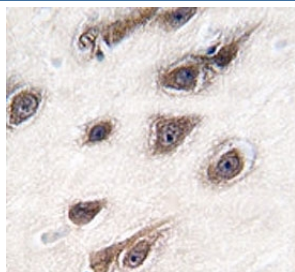
Availability	1-3 business days
Species Reactivity	Human
Predicted Reactivity	Mouse, Rat, Xenopus
Format	Purified
Clonality	Polyclonal (rabbit origin)
Isotype	Rabbit Ig
Purity	Purified
UniProt	P62993
Applications	Western Blot : 1:1000 IHC (Paraffin) : 1:50-1:100
Limitations	This GRB2 antibody is available for research use only.



Western blot analysis of GRB2 antibody and 293 cell lysate (2 ug/lane) either nontransfected (Lane 1) or transiently transfected with the GRB2 gene (2). Predicted molecular weight ~25kDa.



Western blot analysis of GRB2 antibody and A2058 lysate. Predicted molecular weight ~25kDa.



IHC analysis of FFPE human brain tissue stained with GRB2 antibody

Description

GRB2 is an adapter protein that provides a critical link between cell surface growth factor receptors and the Ras signaling pathway. Isoform 2 does not bind to phosphorylated epidermal growth factor receptor (EGFR) but inhibits EGF-induced transactivation of a RAS-responsive element. Isoform 2 acts as a dominant negative protein over GRB2 and by suppressing proliferative signals, may trigger active programmed cell death. [UniProt]

Application Notes

The stated application concentrations are suggested starting amounts. Titration of the GRB2 antibody may be required due to differences in protocols and secondary/substrate sensitivity.

Immunogen

A portion of amino acids 89-118 from the human protein was used as the immunogen for this GRB2 antibody.

Storage

Store at 4°C for up to one month. For long term, aliquot the GRB2 antibody and store frozen at -20°C or colder. Avoid repeated freeze-thaw cycles.