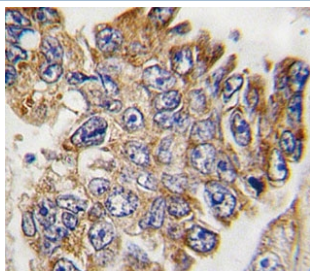


## GRB2 Antibody (F49557)

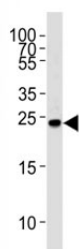
Catalog No.	Formulation	Size
F49557-0.4ML	In 1X PBS, pH 7.4, with 0.09% sodium azide	0.4 ml
F49557-0.08ML	In 1X PBS, pH 7.4, with 0.09% sodium azide	0.08 ml

[Bulk quote request](#)

<b>Availability</b>	1-3 business days
<b>Species Reactivity</b>	Human
<b>Predicted Reactivity</b>	Chicken, Mouse, Rat, Xenopus
<b>Format</b>	Antigen affinity purified
<b>Clonality</b>	Polyclonal (rabbit origin)
<b>Isotype</b>	Rabbit Ig
<b>Purity</b>	Antigen affinity
<b>UniProt</b>	P62993
<b>Applications</b>	Western Blot : 1:1000 IHC (Paraffin) : 1:10-1:50
<b>Limitations</b>	This GRB2 antibody is available for research use only.



IHC analysis of FFPE human lung carcinoma tissue stained with GRB2 antibody



Western blot analysis of lysate from Ramos cell line using GRB2 antibody at 1:1000.  
Predicted molecular weight ~25kDa.

## Description

GRB2 binds the epidermal growth factor receptor and contains one SH2 domain and two SH3 domains. Its two SH3 domains direct complex formation with proline-rich regions of other proteins, and its SH2 domain binds tyrosine phosphorylated sequences. This gene is similar to the Sem5 gene of *C.elegans*, which is involved in the signal transduction pathway.

## Application Notes

Titration of the GRB2 antibody may be required due to differences in protocols and secondary/substrate sensitivity.

## Immunogen

A portion of amino acids 187-216 from the human protein was used as the immunogen for this GRB2 antibody.

## Storage

Aliquot the GRB2 antibody and store frozen at -20oC or colder. Avoid repeated freeze-thaw cycles.