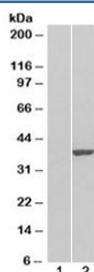


GRAP2 Antibody (R34107)

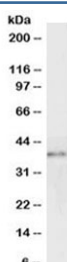
Catalog No.	Formulation	Size
R34107-100UG	0.5 mg/ml in 1X TBS, pH7.3, with 0.5% BSA (US sourced) and 0.02% sodium azide	100 ug

[Bulk quote request](#)

Availability	1-3 business days
Species Reactivity	Human
Predicted Reactivity	Mouse, Rat, Dog, Pig, Cow
Format	Antigen affinity purified
Host	Goat
Clonality	Polyclonal (goat origin)
Isotype	Goat Ig
Purity	Antigen affinity
Gene ID	9402
Applications	Western Blot : 0.5-2ug/ml ELISA (peptide) LOD : 1:32000
Limitations	This GRAP2 antibody is available for research use only.



Western blot of HEK293 lysate overexpressing GRAP2 probed with GRAP2 antibody (mock transfection in lane 1). Predicted molecular weight: ~38 kDa.



Western blot testing of Jurkat lysate with GRAP2 antibody at 0.3ug/ml. Predicted molecular weight: ~38 kDa.

Description

Additional name(s) for this target protein: GRB2-related adaptor protein 2

Application Notes

Optimal dilution of the GRAP2 antibody should be determined by the researcher.

Immunogen

Amino acids GLFPANYVAPMTR were used as the immunogen for this GRAP2 antibody.

Storage

Aliquot and store the GRAP2 antibody at -20oC.